

SL-PP86IP-W2K1

2-way outdoor switch IP67



Thank you for choosing a SIRO light switch!
These simple instructions will help you to install and use your new switch.

**PRODUCT FEATURES**

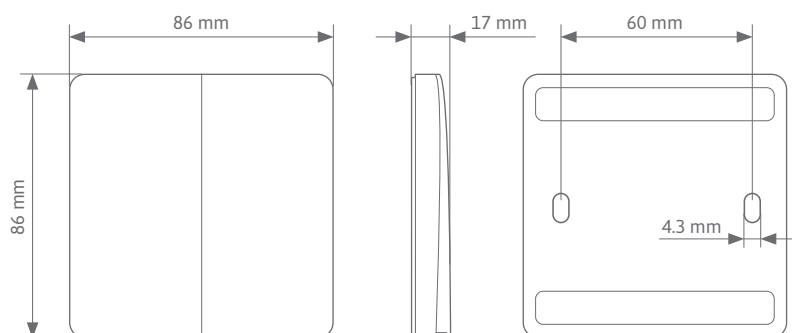
- ▶ 2-way switch for wet rooms and for outdoor-controlling SIRO PUSHPOWER receivers
- ▶ No battery and no wiring necessary!
- ▶ Battery-free device without external power supply.
- ▶ Transmission energy is generated from mechanical energy when the rocker is actuated.
- ▶ Radio-based range up to 80 meters outdoor.
- ▶ 1 button can be connected to any number of Push Power Receivers.
- ▶ A changeover switch function is provided when several switches are used.
- ▶ Two independent MONO areas or one DUO area can be controlled.
- ▶ With DUO, DUO2-Pol and RGB, the first learned button is used to switch on/off and the button next to it is used for colour adjustment.
- ▶ Available in white (K60) and black (K1) versions.
- ▶ Adhesive strips included.

ASSEMBLY

- ▶ On smooth, flat surfaces by screwing or gluing.
- ▶ The switch is delivered pre-assembled. It must be disassembled before for screw mounting.
- ▶ 1. Disassembly for preparation (only for screw mounting): Carefully pull the rocker (2) upwards. The base plate (1) is now exposed and can be screwed in place.
- ▶ Note: With adhesive mounting, the switch can be attached directly in its pre-assembled state – disassembly is not necessary.
- ▶ 2. Attaching the base plate: The substrate must be clean, grease-free, and stable. Attach the base plate (1) using the enclosed adhesive strip or screw it in place.
- ▶ 3. Assembly after screw mounting: Place the rocker (2) back onto the base plate (1) and click into place.

DIMENSIONS

- ▶ switch (LxBxH): 86 x 86 x 17 mm

**TECHNICAL FEATURES**

- ▶ Transfer protocol: RF 433 mhz
- ▶ Range: 30 meters (indoors), 80 meters (outdoors)
- ▶ IP Rating: IP67

**SAFETY AND INSTALLATION
INSTRUCTIONS**

- ▶ This product is not a toy and is not suitable for children!
- ▶ This SIRO PUSHPOWER switch is suitable for outdoor use.

SL-PP86IP-W2K1 (black)

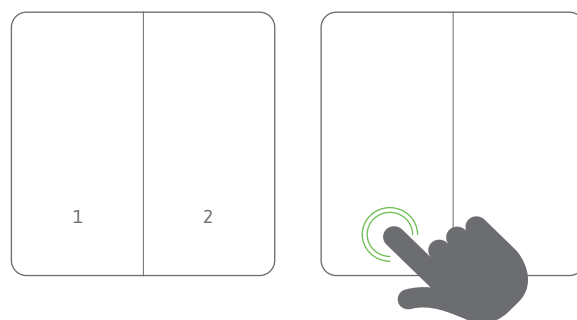
2-way outdoor switch IP67

Ideally combinable with the following SIRO PushPower products:

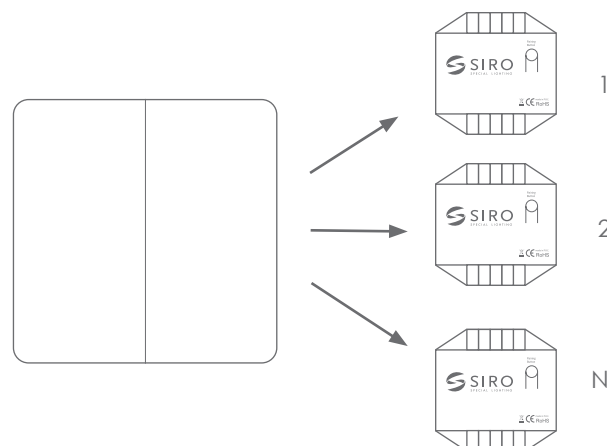
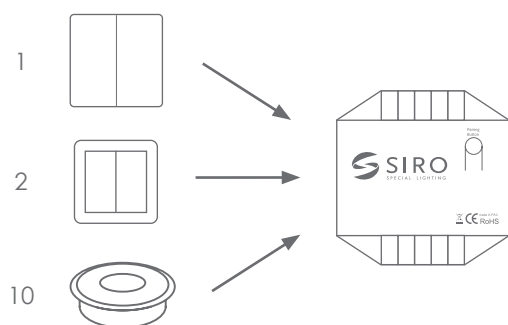
| | |
|----------------|------------------------------------------------------------------------------------------------------------------------------------------------------------------------------------------------------|
| Receiver: | SL-PPREC02TRIAC (230V dimmable), SL-PPREC02SWITCH (230V), SL-PPREC01MONO(12-48V dimmable), SL-PPREC01DUO (12-48V dimmable), SL-PPREC01DUO2W (12-24V dimmable), SL-PPREC01RGB (12-48V dimmable) |
| Top hat rail: | SL-PPREC03RAIL2 (230V) |
| Switch socket: | SL-PPREC01AC-K60 (230V) |

GENERAL FUNCTIONS

| | |
|-----------------------------------|----------------------------|
| 1, 2 | 2-way buttons |
| Single click: | Switching on or off |
| Click and hold button 1: | Dimming 5 - 100% |
| Click and hold button 2: | Colour adjustment |
| Double click: | Switch off all |
| Click and hold when switched off: | Night mode (5% brightness) |



POSSIBLE COMBINATIONS



More controls on one receiver

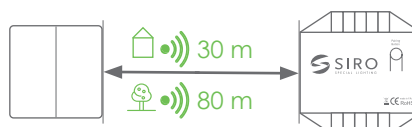
a maximum of 10 PushPower control units (sensors, push buttons, etc.) can be connected to one receiver. Every option counts.

One control on several receivers

1 PushPower control unit can control any number of receivers.

Radio range (depending on the local conditions)

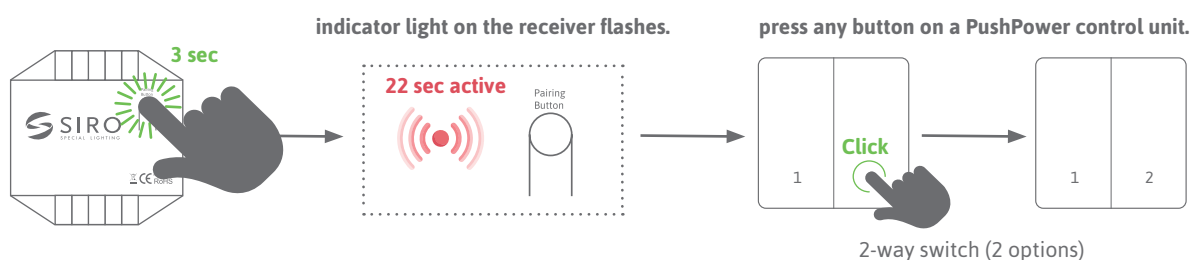
up to 30 m indoors and up to 80 m outdoors.



FUNCTIONS IN DETAIL

CONNECT (TEACH-IN) CONTROL UNIT (SWITCH) & RECEIVER

This is how you establish communication between the switch and your receiver:

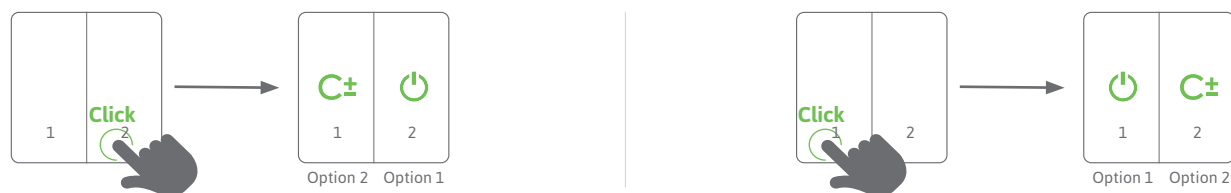


press and hold for 3 seconds

The activity mode remains active for 22 seconds, after which the teach-in process is canceled and the light switches off.

The learning process can be canceled by disconnecting the power.

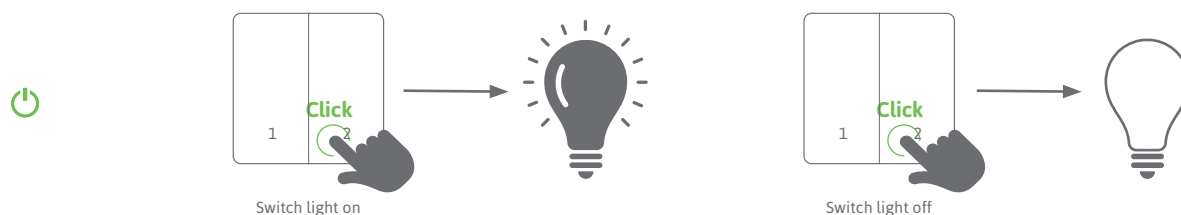
Each button/option (1&2) can be assigned its own function/option. If it is not assigned, this is a space bar.



With the DUO system, activating the first button (option 1) switches it to ON/OFF and the other button (option 2) automatically becomes the color controller. When activating several switches, they act as toggle switches.

SINGLE CLICK - ON/OFF

A single click refers to a single, brief press of the light switch.

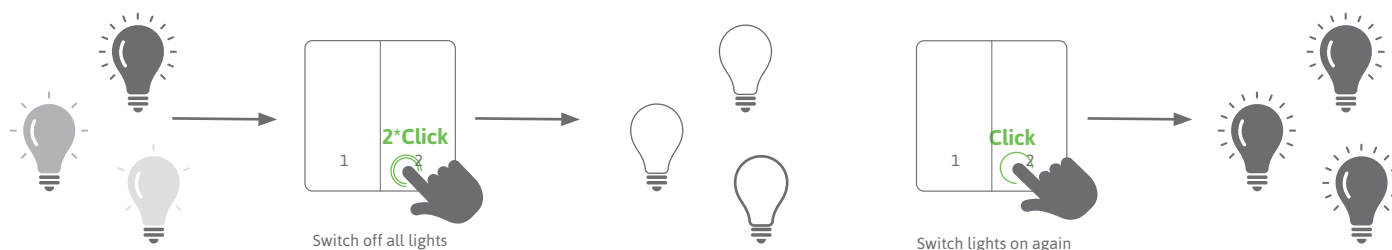


With SIRO light switches, a single click is used to switch the connected light source on or off.

This corresponds to the basic function of a switch, where a single click changes the status of the lighting.

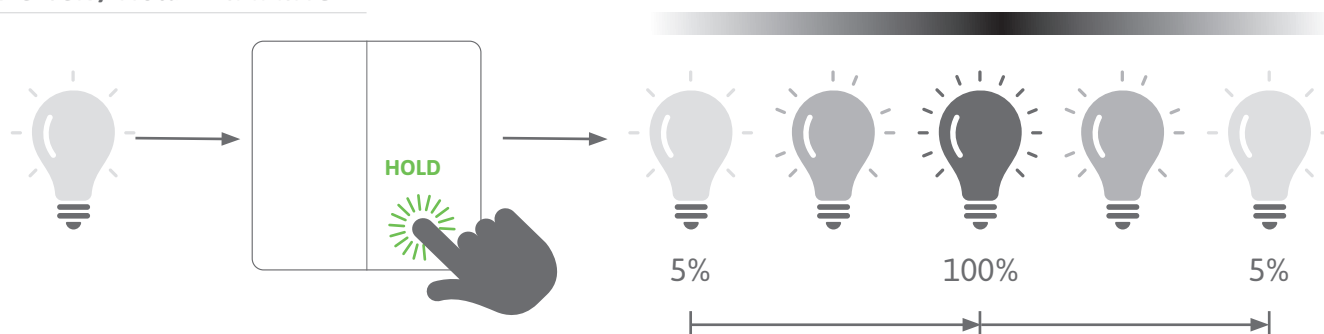
DOUBLE CLICK - SYNCHRONIZE

A double click refers to pressing the light switch twice in quick succession.



All lights are switched off. This function is used to synchronize several lights when they are running asynchronously.

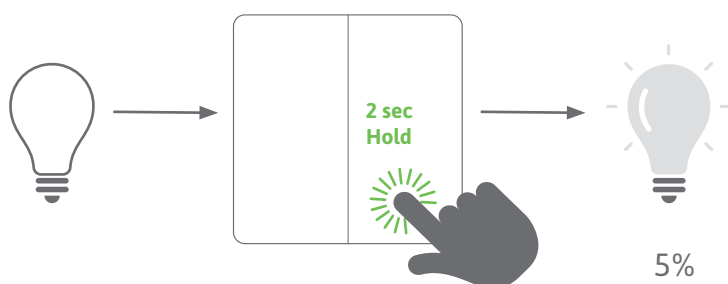
SLOW CLICK / Hold - DIMMING



A longer press on the switch can be used to continuously increase or decrease the brightness or color temperature.

This enables precise adjustment of the lighting according to individual preferences. By default, the light starts at 50% brightness or 0% cool white and 100% warm white for DUO systems. Pressing and holding the dimming function starts the light with cyclical dimming.

SLOW CLICK WHEN LIGHT IS SWITCHED OFF / NIGHT MODE



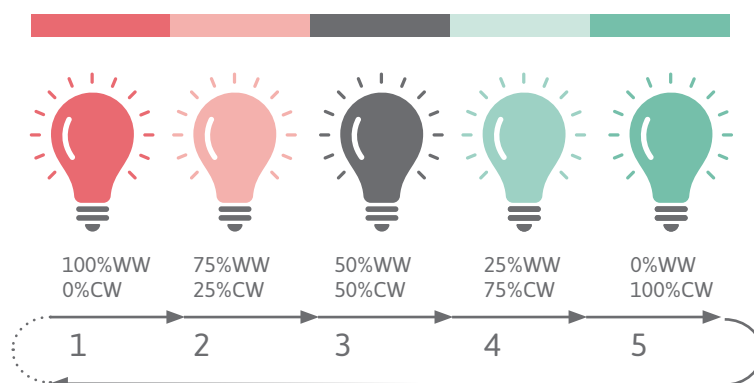
A longer press (2 seconds) on the switch when it is switched off can be used to activate the night light.

The light starts at 2% brightness.

BEHAVIOR OF THE COLOR MOOD WITH DUO RECEIVER

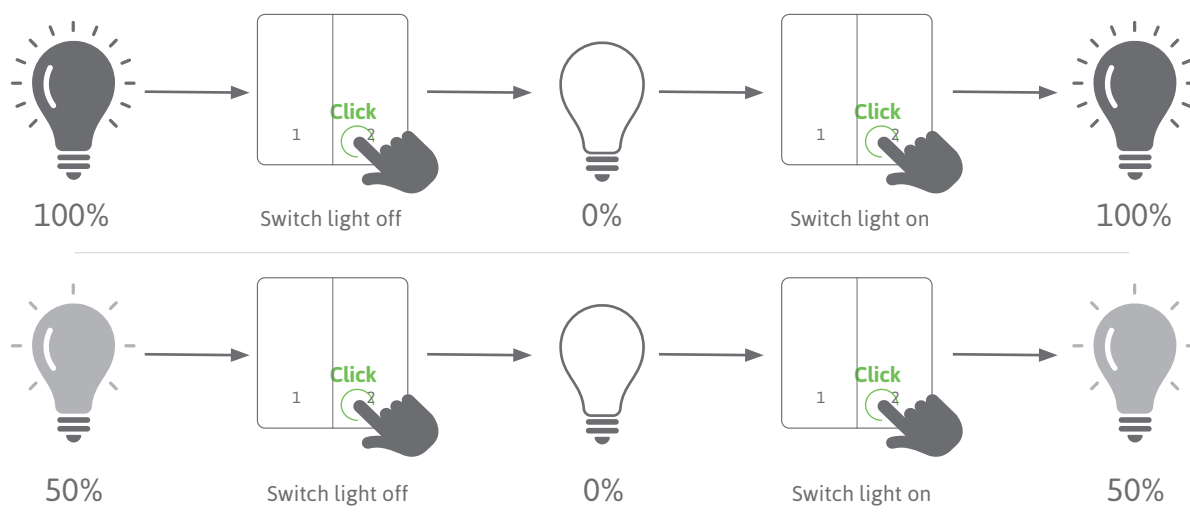
There are 5 settings:

- 1 ▶ 100% warm white (WW) / 0% cool white (CW)
- 2 ▶ 75% warm white (WW) / 25% cool white (CW)
- 3 ▶ 50% warm white (WW) / 50% cool white (CW)
- 4 ▶ 25% warm white (WW) / 75% cool white (CW)
- 5 ▶ 0% warm white (WW) / 100% cool white (CW)

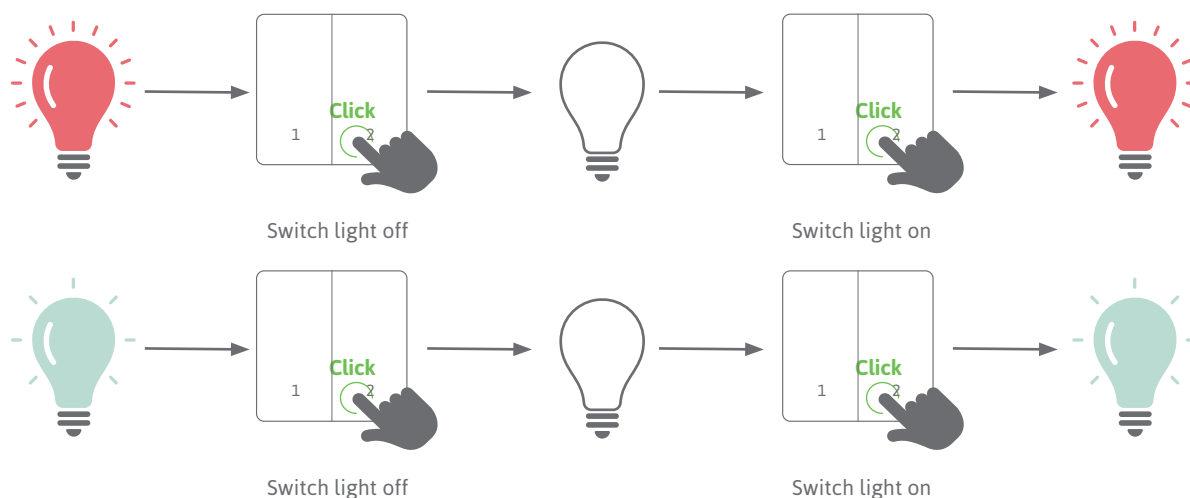


MEMORY FUNCTION

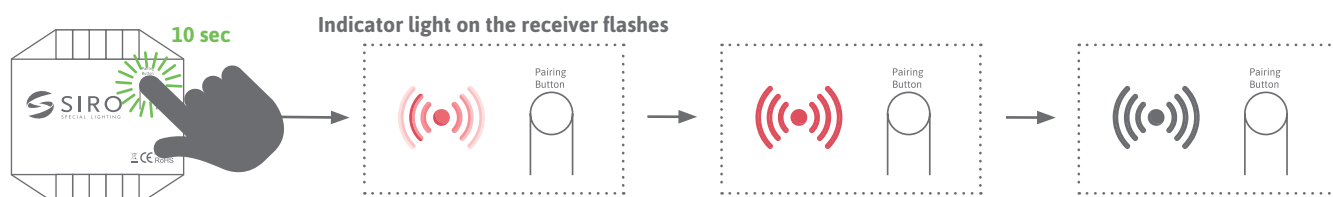
The system always remembers the last setting of the lighting situation before switching off. (power failure)



Behavior of the color mood with DUO Receiver: Here the system remembers the set color temperature in addition to the brightness.



RESETTING THE RECEIVER / FACTORY STATUS



Press and hold for 10 seconds. All connections are now deleted and the receiver is ready for a new link.