

SL-PPI55W4K60

4-way furniture switch with 60 mm mounting frame (white)



Thank you for choosing a SIRO light switch!

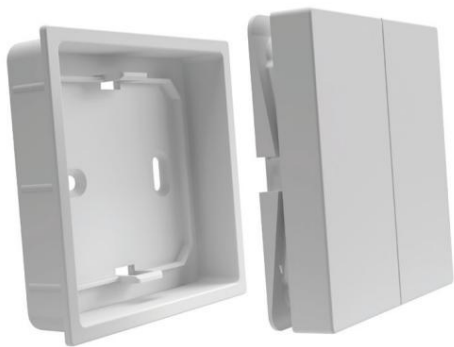
This simple guide will help you install and use your new switch.

**PRODUCT FEATURES**

- 4-way switch for controlling SIRO PUSHPOWER Receiver
- Compatible with many 55mm switch frame systems.
- No battery or wiring required!
 - Battery-free device without external power supply.
- Transmission energy is generated from mechanical energy when actuated the seesaw.
- Radio-based range up to 80 meters in open areas.
- 1 button can be connected to any number of Push Power Receivers.
- Changeover switch function when using multiple switches.
 - Four independent MONO areas or two DUO areas can be controlled.
- Available in white (K60) and black (K1) versions
- Frame and base plate included.

MONTAGE

1. The surface is clean, free of grease and stable.
2. Mill the frame and glue or fix it with screws.
3. Plug in the radio module (3).
4. Attach the rocker (4).

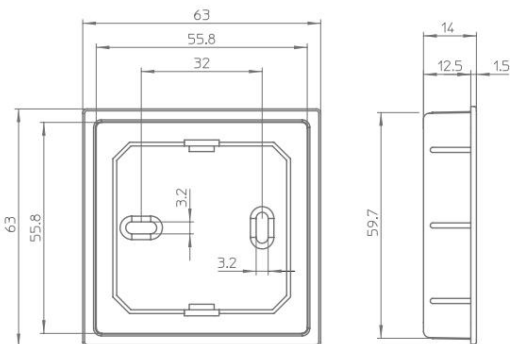
**TECHNICAL FEATURES**

- Transmission protocol: RF 433 mhz
- Range (without mesh): 30 meters (in buildings)
- IP Rating: IP20

DIMENSIONS

Switch including frame (LxWxH):

60 x 60 x 12 mm

**SAFETY AND ASSEMBLY INSTRUCTIONS**

- This product is not a toy and is not suitable for children!
- The SIRO LED system is designed for indoor use.
- Unprotected outdoor use is not permitted.
- Contact with moisture must be avoided at all costs!