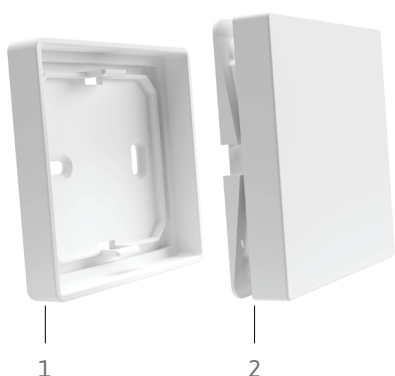
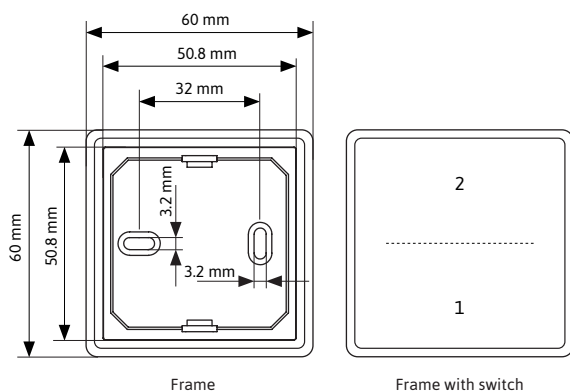


SL-PPA55W2K60

2-way surface-mounted furniture switch with 60 mm frame

**SWITCH ASSEMBLY**

- 1 Frame
- 2 Rocker (2-way) with radio module

**PRODUCT FEATURES**

- ▶ 2-way switch for controlling SIRO PUSHPOWER receivers
- ▶ Also suitable for many 55 mm switch frame systems.
- ▶ No battery and no wiring necessary!
- ▶ Battery-free device without external power supply.
- ▶ Transmission energy is generated from mechanical energy when the rocker is actuated.
- ▶ Radio-based range up to 80 meters in open areas.
- ▶ 1 button can be connected to any number of Push Power Receivers.
- ▶ A changeover switch function is provided when several switches are used.
- ▶ Two independent MONO areas or one DUO area can be controlled.
- ▶ With DUO, DUO2-Pol and RGB, the first learned button is used to switch on/off and the button next to it is used for colour adjustment.
- ▶ Available in white (K60) and black (K1) versions.
- ▶ Frame included in the scope of delivery.

ASSEMBLY

- ▶ On smooth, flat surfaces by screwing or gluing
- ▶ 1. The substrate is clean, grease-free and stable.
- ▶ 2. Press the frame (1) onto the adhesive points or fix it with screws.
- ▶ 3. Attach the rocker with the radio module (2).

DIMENSIONS

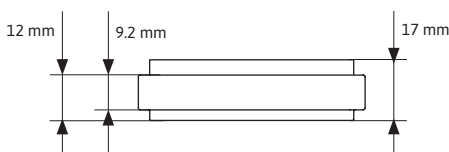
- ▶ Switch incl. frame (LxBxH): 60 x 60 x 17 mm
- ▶ Switch without frame (LxBxH): 55 x 55 x 17 mm

TECHNICAL FEATURES

- ▶ Transfer protocol: RF 433 mhz
- ▶ Range: 30 meters (indoors)
- ▶ IP Rating: IP20

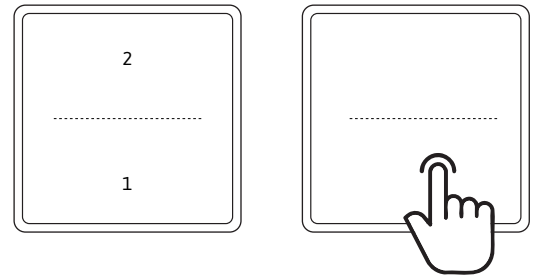
SAFETY AND INSTALLATION INSTRUCTIONS

- ▶ This product is not a toy and is not suitable for children!
- ▶ The installation must be carried out without tension!
- ▶ This SIRO PUSHPOWER switch is only suitable for indoor use.
- ▶ Unprotected outdoor use is not permitted.
- ▶ Contact with moisture must be avoided at all costs!

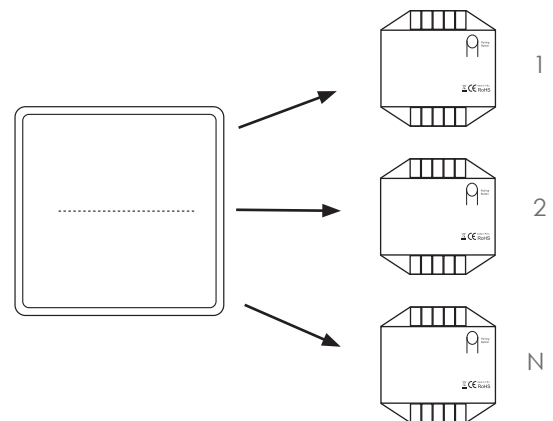
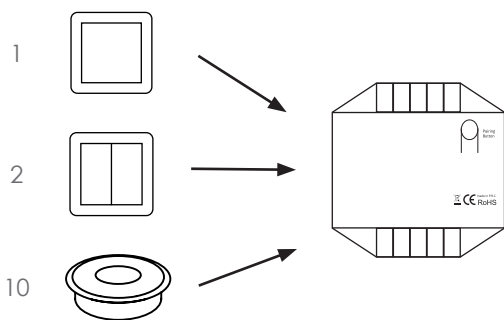


GENERAL FUNCTIONS

1, 2	2-way buttons
Single click:	Switching on or off
Click and hold button 1:	Dimming 5 - 100%
Click and hold button 2:	Colour adjustment
Click and hold when switched off:	Night mode (5% brightness)



POSSIBLE COMBINATIONS



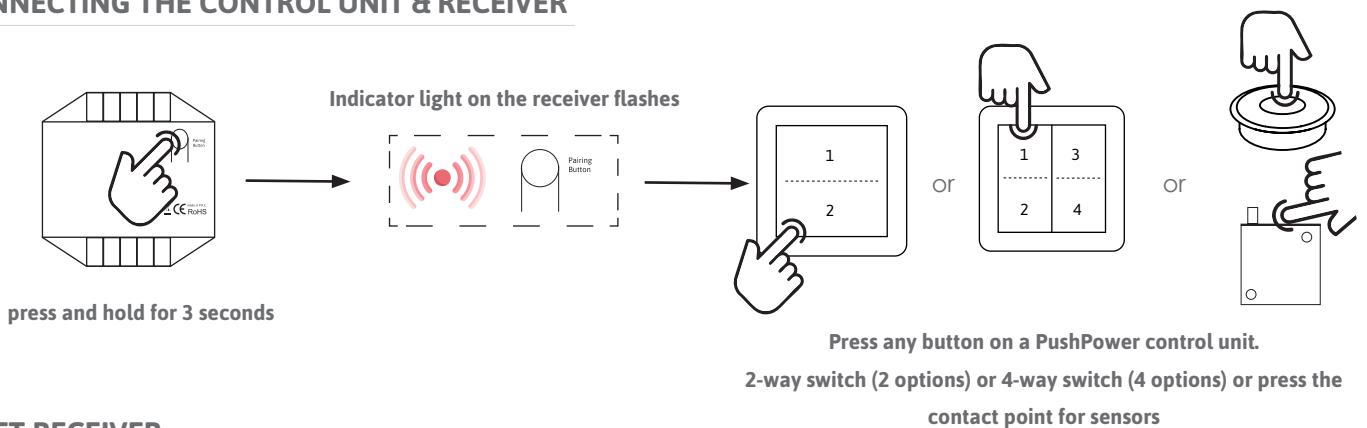
More controls on one receiver

a maximum of 10 PushPower control units (sensors, push buttons, etc.) can be connected to one receiver.

One control on several receivers

1 PushPower control unit can control any number of receivers.

CONNECTING THE CONTROL UNIT & RECEIVER



RESET RECEIVER

