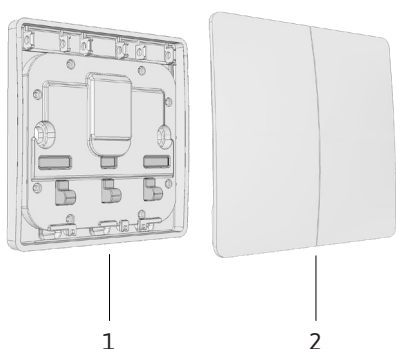
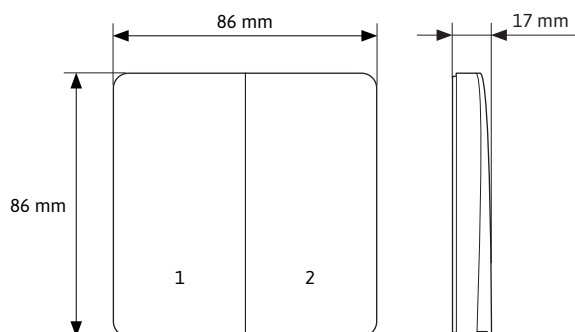


SL-PP86IP-W2K60

2-way outdoor switch IP67

**SWITCH ASSEMBLY**

- 1 Base plate (incl. Radio module)
- 2 Rocker (2-way)

**PRODUCT FEATURES**

- ▶ 2-way switch for wet rooms and for outdoor-controlling SIRO PUSHPOWER receivers
- ▶ No battery and no wiring necessary!
- ▶ Battery-free device without external power supply.
- ▶ Transmission energy is generated from mechanical energy when the rocker is actuated.
- ▶ Radio-based range up to 80 meters outdoor.
- ▶ 1 button can be connected to any number of Push Power Receivers.
- ▶ A changeover switch function is provided when several switches are used.
- ▶ Two independent MONO areas or one DUO area can be controlled.
- ▶ With DUO, DUO2-Pol and RGB, the first learned button is used to switch on/off and the button next to it is used for colour adjustment.
- ▶ Available in white (K60) and black (K1) versions.
- ▶ Adhesive strips included.

ASSEMBLY

- ▶ On smooth, flat surfaces by screwing or gluing.
- ▶ 1. The substrate is clean, grease-free and stable.
- ▶ 2. Press the base plate (1) onto the adhesive points or fix it with screws.
- ▶ 3. Attach the rocker (2).

DIMENSIONS

- ▶ Switch (LxWxH): 86 x 86 x 17 mm

TECHNICAL FEATURES

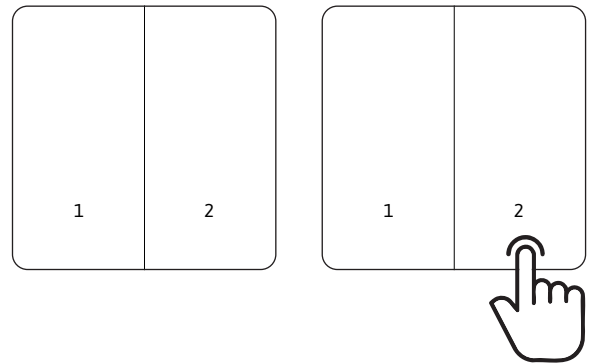
- ▶ Transfer protocol: RF 433 mhz
- ▶ Range 30 meters (indoors), 80 meters (outdoors)
- ▶ IP Rating: IP67

SAFETY AND INSTALLATION INSTRUCTIONS

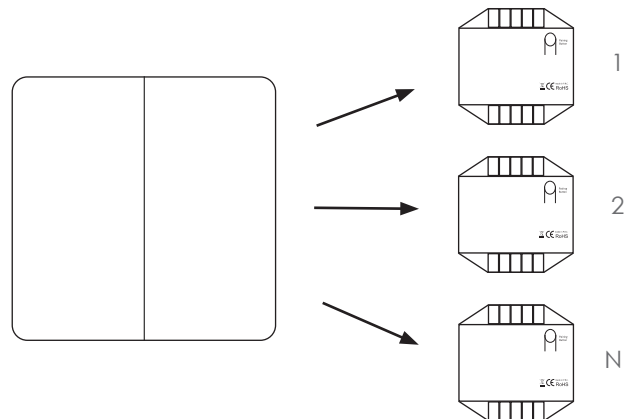
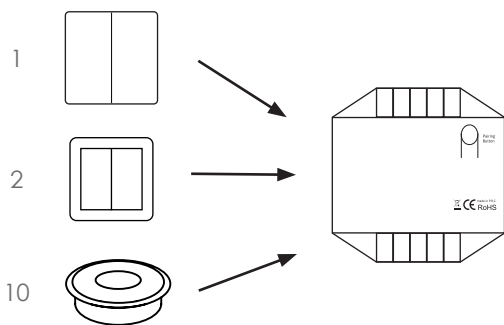
- ▶ This product is not a toy and is not suitable for children!
- ▶ This SIRO PUSHPOWER switch is suitable for outdoor use.

GENERAL FUNCTIONS

1, 2	2-way buttons
Single click:	Switching on or off
Click and hold button 1:	Dimming 5 - 100%
Click and hold button 2:	Colour adjustment
Click and hold when switched off:	Night mode (5% brightness)



POSSIBLE COMBINATIONS



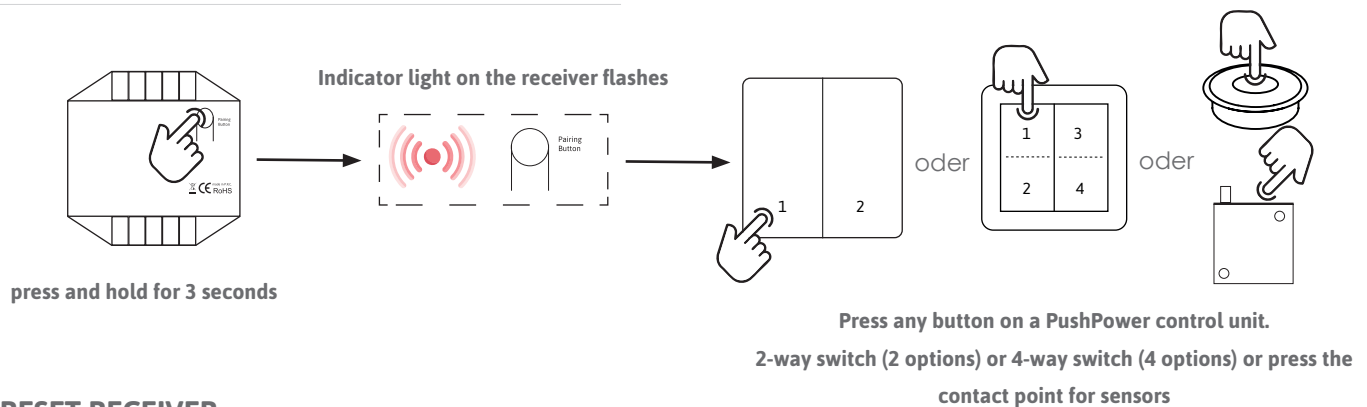
More controls on one receiver

a maximum of 10 PushPower control units (sensors, push buttons, etc.) can be connected to one receiver.

One control on several receivers

1 PushPower control unit can control any number of receivers.

CONNECTING THE CONTROL UNIT & RECEIVER



RESET RECEIVER

