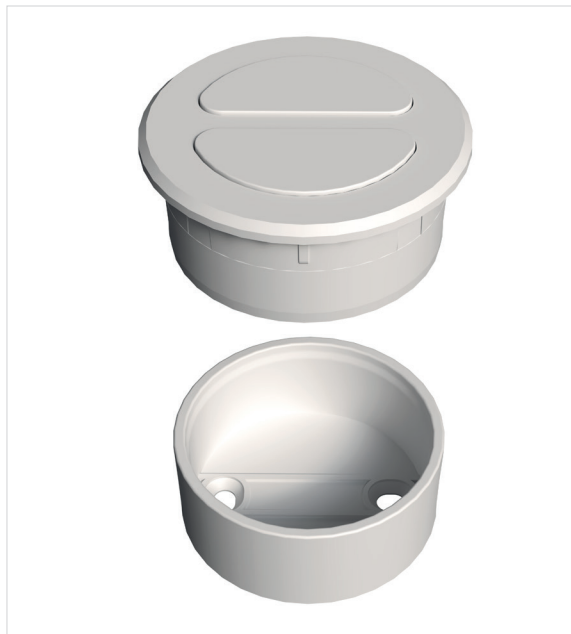


SL-PP40W2K60

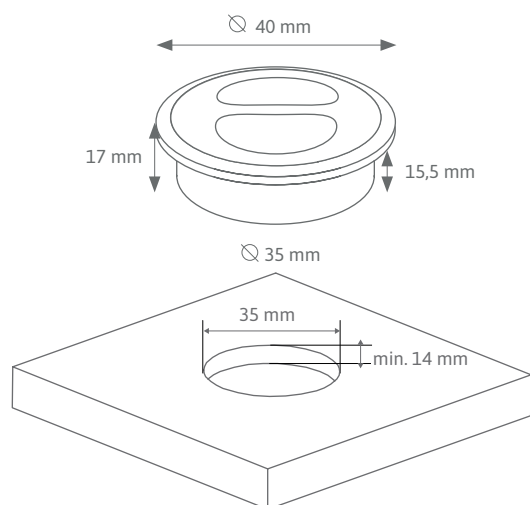
Millable 2-way push button 40 mm (white)

**PRODUCT FEATURES**

- ▶ 2-way push button for routing with 35 mm diameter.
- ▶ Battery-free device without external power supply and no wiring necessary!
- ▶ Battery-free device without external power supply.
- ▶ Transmission energy is generated from mechanical energy when the of the push button.
- ▶ Radio-based range up to 80 metres. (open area)
- ▶ Push Button can be connected to any number of Push Power Receivers.
- ▶ Functions:
 - ON - OFF - DIMMING with MONO receiver, (2 areas controllable)
 - ON - OFF - DIMMING - setting the COLOUR for DUO receivers
- ▶ When several switches are used, a changeover switch function is provided.
- ▶ Available in white (K60) and black (K1) version

ASSEMBLY

- ▶ Can be milled with 35 mm pot hole drill bit
- ▶ Milling diameter 35 mm
- ▶ Milling depth: min. 14 mm

TECHNICAL DRAWING**DIMENSIONS**

- ▶ Push Taster (DxH): 40 x 17 mm

TECHNICAL FEATURES

- ▶ Transmission protocol: RF 433 mhz
- ▶ Range (without mesh): 30 metres (indoors)
- ▶ IP rating: IP20

SAFETY AND INSTALLATION INSTRUCTIONS

- ▶ This product is not a toy and is not suitable for children!
- ▶ The SIRO LED system is only suitable for indoor use.
- ▶ Unprotected outdoor use is not permitted.
- ▶ Contact with moisture must be avoided at all costs!

SCOPE OF DELIVERY

- ▶ Push button
- ▶ Mounting ring



Darf nicht in den Hausmüll entsorgt werden.
Must not be disposed of in household waste.

SIRO Beschläge- und
Metallwarenfabrik
Spielfeldstraße 12
4452 Ternberg, Austria

Tel . +43 (0)7256.6020.0
Fax . +43 (0)7256.8932
E-Mail office@siro.at
Web . www.siro.at

© 2024 Alle Rechte
vorbehalten.
All rights reserved
Version 01/25