

REALISING LIGHTING VISIONS

illuminate your dreams





IGNITED IN YOUR HANDS

PUSHPOWER THE FIRE OF
LIGHT, EFFICIENCY & ELEGANCE



CONTENT

01

SWITCH

SURFACE-MOUNTED & PORTABLE SWITCHES
FURNITURE / BUILT-IN SWITCHES

08-23

02

RECEIVER

MONO | DUO | PLUG | SWITCH | TRIAC | RAIL

24-27

03

NETWORK PARTS

28-31

20 / 60 / 100 / 150 WATTS

04

MONO

3 MM | 5 MM | 8 MM
FLEXLINE

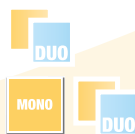


34-45

05

DUO

DIAMOND SERIES
MONO & DUO SPOTS



46-47

06

PROCESSING

ONE4ALL PROFIL- FLIPLENS - EXPRESS



48-55





ILLUMINATE YOUR CREATIONS

Are you looking for an innovative solution to offer your customers high-quality lighting solutions without sacrificing a lot of time and effort for installation? Then the PUSHPOWER LED system from SIRO is just right for you!

Our Pushpower LED system offers you the ultimate in flexibility and convenience. With no batteries and no wiring, it allows you to seamlessly integrate high-quality LED lighting into your projects. Thanks to the innovative PUSHPOWER technology, you can install the lighting very easily and without much effort, saving you valuable time.

The quality of Siro products stands for itself. With our PUSHPOWER LED system, you not only get a reliable lighting solution, but also products that are easy to use and perfectly matched to each other.

Discover the advantages of the Pushpower LED system from Siro:

Simple installation without battery maintenance and without wiring the switches. In no time at all you have upgraded your piece of furniture with light. Due to the simple handling, you do not need an electrician for this. Breathe life into your furniture and offer your customers sophisticated lighting solutions that inspire!

For further information and orders, please do not hesitate to contact us.

Yours sincerely,
The Siro team



THE THE FUTURE OF LED LIGHTING

NO BATTERIES, NO WIRING

No batteries that have to be constantly replaced and no complex cabling that clutters up your rooms.
- Instead, they rely on the environmentally friendly switches, which are only operated by finger power.
Easy to install and even easier to use.

FLEXIBLE CONTROL FOR EVERY NEED

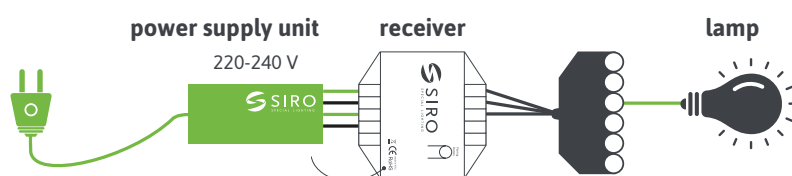
Our receivers are designed for voltages from 12 to 48 volts DC and operate on a reliable radio basis. This means that you can control your LED lighting conveniently and without annoying cables. Whether you want to control the lighting in your old home, your modern office, the sauna, the cozy hotel rooms or any other place - our system adapts to your needs. Available for MONO (single-color LED lights) and DUO (stepless adjustment of the color temperature between warm white and neutral white).

COMPATIBLE WITH STANDARD SWITCH FRAMES

Our 2-gang and 4-gang switches are specially designed for 55 mm frames in order to be compatible with standard switch frames. A round mobile switch with a diameter of 62 mm, and a round 35 mm switch for milling round off the range.

THE FUTURE OF LIGHTING CONTROL

With our new control system for LED lighting, controlling your lighting has never been easier. Experience the future of lighting technology with our innovative system.

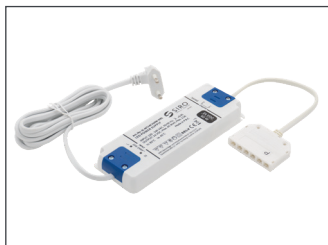


HOW IS THE SYSTEM MADE UP?

Components of the SIRO LED system:

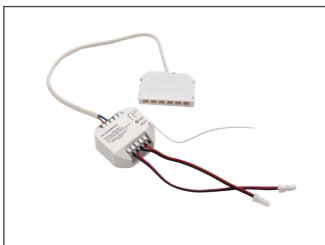
ECG/MAINS ADAPTER (IP20)

20 / 60 / 100 / 150 watts



RECEIVER

MONO & DUO



LIGHT

Spot / LED strips



CONTROLLER

wireless and battery-free switching technology

CONSTRUCTION SWITCH
Assembly:
glue or screw on

Standard 2



SL-PP55W2

Standard 4



SL-PP55W4

Furniture Surface 2



SL-PPA55W2

Furniture Surface 4



SL-PPA55W4

Cookie



SL-PP62

BUILT-IN SWITCH
Assembly:
mill in

Built-in 2



SL-PPI55W2

Built-in 4



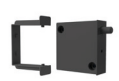
SL-PPI55W4

Mini 35



SL-PP40

Door sensor



SL-PPDOOR01

SWITCH

ENVIRONMENTALLY FRIENDLY SWITCHING WITHOUT POWER SUPPLY & BATTERY?

"If an idea doesn't seem absurd at first, it's no good." Albert Einstein

PUSHPOWER
WIRELESS & BATTERY FREE

Discover our pioneering control system for LED lighting

- an innovation that revolutionises your lighting control and brings a new era of comfort and efficiency.

New standards in lighting technology: **No batteries - No maintenance. No wiring - pure convenience!**

Experience the freedom of battery-free switches that are activated by kinetic energy alone. Tested 200,000 times, this environmentally friendly solution eliminates the need to constantly replace batteries and hassle with wiring. Our switches offer a clean, stylish and practical lighting solution; easy to install and even easier to use. The innovative 55 mm frame switches, compatible with many frames from popular manufacturers, are available in 2-way and 4-way versions that function as changeover switches. This flexibility enables comprehensive and customisable control of your lighting.





OUR RANGE OF BATTERY-FREE SWITCHES

Standard 2

2-way switch
(55 mm)
black & white



SL-PP55W2K60 (white)
SL-PP55W2K1 (black)

Standard 4

4-way switch
(55 mm)
black & white



SL-PP55W4K60 (white)
SL-PP55W4K1 (black)

Furniture Surface 2

2-way switch
(55 mm)
black & white



SL-PPA55W2K60 (white)
SL-PPA55W2K1 (black)

Furniture Surface 4

4-way switch
(55 mm)
black & white



SL-PPA55W4K60 (white)
SL-PPA55W4K1 (black)

Cookie

Push button (62 mm)
black



SL-PP62K1 (black)

Built-in 2

2-way switch
(55 mm / millable)
black & white



SL-PPI55W2K60 (white)
SL-PPI55W2K1 (black)

Built-in 4

4-way switch
(55 mm / millable)
black & white



SL-PPI55W4K60 (white)
SL-PPI55W4K1 (black)

Mini 35

Push mini button
(40 mm / millable)
black & white



SL-PP40K60 (white)
SL-PP40K1 (black)

Door sensor

Sensor for doors/shutters
(millable)
black & white



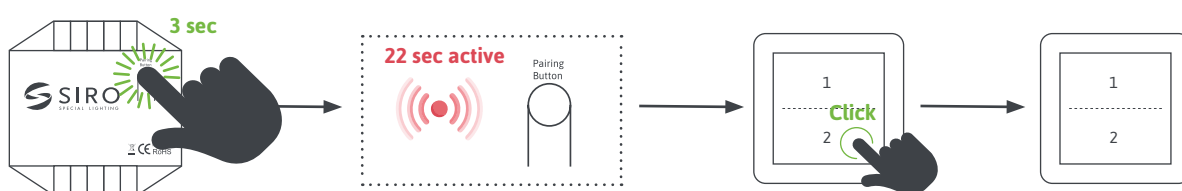
SL-PPDOOR01K60 (white)
SL-PPDOOR01K1 (black)

SWITCH

FUNCTIONALITY

IT'S SO EASY TO CONNECT SWITCH & RECEIVER:

Switches and receivers can be easily connected in a matter of seconds.



Press the pairing button on the receiver for 3 seconds.

The light now starts to flash (heartbeat).

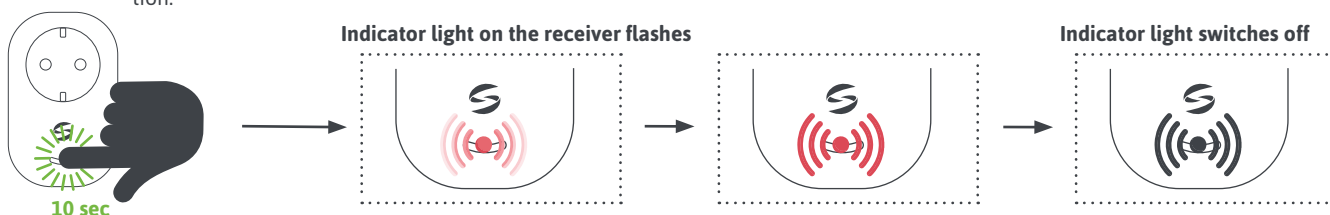
Press any button on the PushPower control unit with a short single click (<0.5 sec).

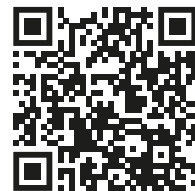
Activity mode remains active for 22 seconds, after which the teach-in process is cancelled and the light switches off. With 2-way switches you have 2 options.

With DUO, the opposite switch automatically becomes the colour controller when connected to the receiver.

IT'S THIS EASY TO DELETE THE CONNECTIONS:

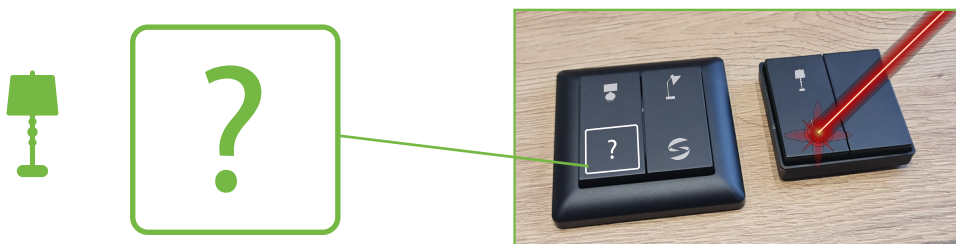
Press and hold for 10 seconds. All connections are now deleted and the receiver is ready for a new connection.





LASER ENGRAVING

MAKE YOUR INDIVIDUAL SWITCHES!



Unique accents & making a strong statement with personalized engraving

Turn your lighting into a personal statement with the individual engraving for SIRO Pushpower switches. Whether for your home, your office, your hotel or your business premises - with a customized engraving you can give your switches a personal touch and set unique accents.

Our high-precision engraving technology allows you to add your company logo, names, symbols or even small messages to your switches. Send us your vectorised file and give your light switches a very personal touch that makes them unique and perfectly reflects your style.

Discover the possibilities of individual engraving for SIRO Pushpower switches available from 20 pieces and transform your lighting into something very special.

contact: lasergravur@siro.at

LIGHT SWITCH

STANDARD 55

2-WAY LIGHT SWITCH for 55 mm frame



Article No.

SL-PP55W2K1 (black)
SL-PP55W2K60 (white)

PRODUCT FEATURES

- ▶ 2- and 4-way switch for controlling SIRO PUSHPOWER receivers.
- ▶ Also suitable for many 55 mm switch frame systems.
- ▶ No battery and no wiring necessary!
- ▶ Battery-free device without external power supply.
- ▶ Transmission energy is generated from mechanical energy when the rocker is actuated.
- ▶ Radio-based range of up to 80 meters outdoors and 30 meters (without mesh) in buildings.
- ▶ 1 button can be connected to any number of PushPower receivers.
- ▶ A changeover switch function is provided when several switches are used.
- ▶ Two independent MONO areas or one DUO area can be controlled.
- ▶ Available in white (K60) and black (K1) versions
- ▶ Frame and base plate included.

4-WAY LIGHT SWITCH for 55 mm frame



Article No.

SL-PP55W4K1 (black)
SL-PP55W4K60 (white)

ASSEMBLY

- ▶ On conventional appliance box (DIN 49073) or on smooth, flat surfaces by screwing or gluing.
- ▶ 1. The substrate is clean, grease-free and stable. 2. Press the base plate (1) onto the adhesive points or fix it with screws. 3. Place the cover frame (2) on the base plate. 4. Attach the radio module (3). 5. Attach the rocker (4).





SWITCH CONSTRUCTION

- 1 Base plate
- 2 Cover frame
- 3 Radio module
- 4 Rocker (2-way)



DIMENSIONS

- ▶ Switch incl. frame (LxWxH): 80 x 80 x 17 mm
- ▶ Switch without frame (LxWxH): 55 x 55 x 17 mm

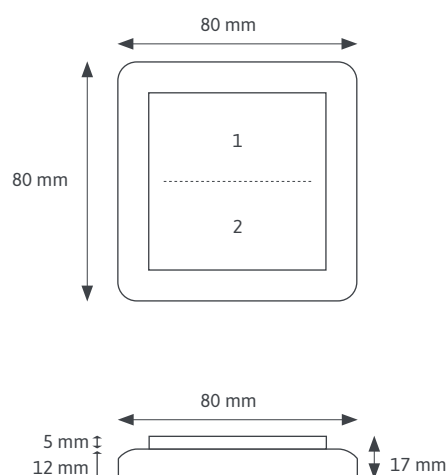
TECHNICAL FEATURES

- ▶ Transfer protocol: RF 433 MHz
- ▶ IP Rating: IP20

SAFETY AND INSTALLATION INSTRUCTIONS

- ▶ This product is not a toy and is not suitable for children!
- ▶ The SIRO LED system is designed for indoor use.
- ▶ Unprotected outdoor use is not permitted.
- ▶ To avoid contact with moisture at all costs!

TECHNICAL DRAWING



LIGHT SWITCH

FURNITURE CONSTRUCTION

2-WAY FURNITURE SURFACE-MOUNTED SWITCH with 60 mm frame



Article No.

SL-PPA55W2K1 (black)

SL-PPA55W2K60 (white)

PRODUCT FEATURES

- ▶ 2- and 4-way switch for controlling SIRO PushPower receivers.
- ▶ Compatible with many 55mm switch frame systems.
- ▶ No battery and no wiring necessary!
- ▶ Battery-free device without external power supply.
- ▶ Transmission energy is generated from mechanical energy when the rocker is actuated.
- ▶ Radio-based range of up to 80 meters outdoors and 30 meters (without mesh) in buildings.
- ▶ 1 button can be connected to any number of Push Power Receivers.
- ▶ Toggle switch function when using multiple switches.
- ▶ Four independent MONO areas or two DUO areas can be controlled.
- ▶ Available in white (K60) and black (K1) versions
- ▶ Frame and base plate included in the scope of delivery.

4-WAY FURNITURE SURFACE-MOUNTED SWITCH with 60 mm frame



Article No.

SL-PPA55W4K1 (black)

SL-PPA55W4K60 (white)

ASSEMBLY

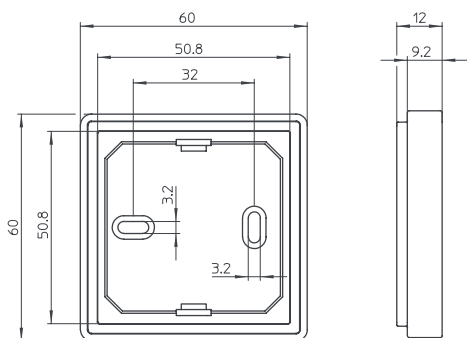
1. The substrate is clean, grease-free and stable.
 2. Press the frame onto the adhesive dots or fix it with screws.
- ▶ Attach the radio module (3).
 - ▶ Attach the rocker (4).



DIMENSIONS

- ▶ Switch incl. frame (LxWxH): 60 x 60 x 12 mm

TECHNICAL DRAWING



TECHNICAL FEATURES

- ▶ Transfer protocol: RF 433 MHz
- ▶ IP Rating: IP20

SAFETY AND INSTALLATION INSTRUCTIONS

- ▶ This product is not a toy and is not suitable for children!
- ▶ The SIRO LED system is designed for indoor use.
- ▶ Unprotected outdoor use is not permitted.
- ▶ To avoid contact with moisture at all costs!

LIGHT SWITCH

COOKIE

PUSH BUTTON with 62 mm diameter



Fig. in original size

Article No.

SL-PP62K1 (black)

PRODUCT FEATURES

- ▶ Push button to stick in the room or on furniture.
- ▶ No battery and no wiring necessary!
- ▶ Battery-free device without external power supply.
- ▶ Transmission energy is generated from mechanical energy when the push button is pressed.
- ▶ Radio-based range of up to 80 meters outdoors and 30 meters (without mesh) in buildings.
- ▶ Push button can be connected to any number of PushPower receivers.
- ▶ Functions: ON - OFF - DIMMING with MONO receiver ON - OFF - DIMMING with DUO receiver (no colour change possible!)
- ▶ A changeover switch function is provided when several switches are used.
- ▶ Available in black (K1) version

ASSEMBLY

- ▶ Free to use
- ▶ glue with adhesive ring



Fig. in original size

DIMENSIONS

- ▶ Push button (DxH): 62 x 16 mm

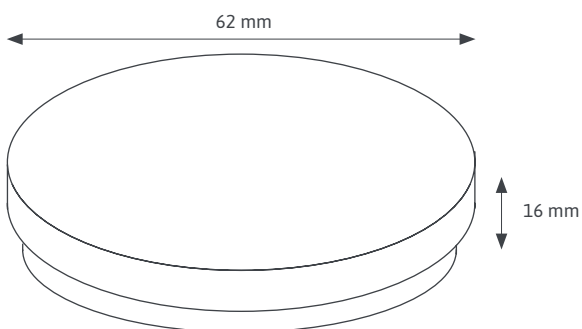
TECHNICAL FEATURES

- ▶ Transfer protocol: RF 433 MHz
- ▶ IP rating: IP20

SAFETY AND INSTALLATION INSTRUCTIONS

- ▶ This product is not a toy and is not suitable for children!
- ▶ The SIRO LED system is designed for indoor use.
- ▶ Unprotected outdoor use is not permitted.
- ▶ To avoid contact with moisture at all costs!

TECHNICAL DRAWING



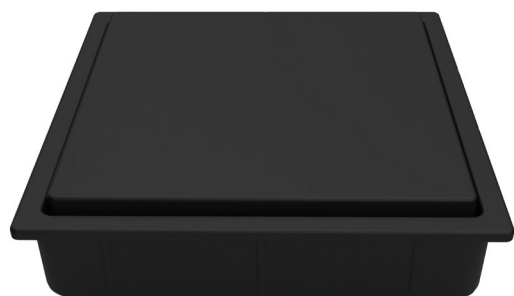
SCOPE OF DELIVERY

- ▶ Pushbutton
- ▶ Adhesive strips in a circle shape

LIGHT SWITCH

FURNITURE BUILT IN

2-WAY FURNITURE INSTALLATION SWITCH with 60 mm frame



Article No.

SL-PPI55W2K1 (black)

SL-PPI55W2K60 (white)

PRODUCT FEATURES

- ▶ 2- and 4-way switch for controlling SIRO PUSHPOWER receivers.
- ▶ Compatible with many 55mm switch frame systems.
- ▶ No battery and no wiring necessary!
- ▶ Battery-free device without external power supply.
- ▶ Transmission energy is generated from mechanical energy when the rocker is actuated.
- ▶ Radio-based range of up to 80 meters outdoors and 30 meters (without mesh) in buildings.
- ▶ 1 button can be connected to any number of Push Power Receivers.
- ▶ Toggle switch function when using multiple switches.
- ▶ Four independent MONO areas or two DUO areas can be controlled.
- ▶ Available in white (K60) and black (K1) versions
- ▶ Frame and base plate included in the scope of delivery.

4-WAY FURNITURE SWITCH with 60 mm frame



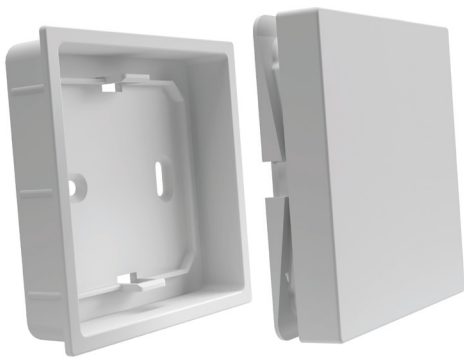
Article No.

SL-PPI55W4K1 (black)

SL-PPI55W4K60 (white)

ASSEMBLY

- ▶ Can be milled with milling depth: min. 14 mm



DIMENSIONS

- ▶ Switch incl. frame (LxWxH): 60 x 60 x 12 mm

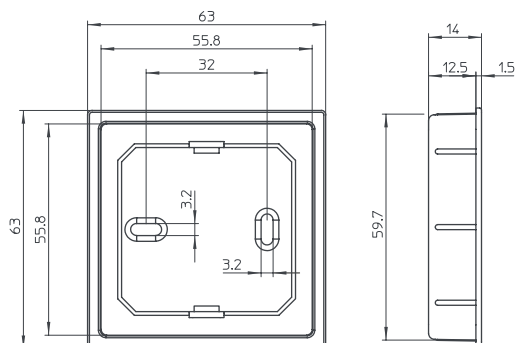
TECHNICAL FEATURES

- ▶ Transfer protocol: RF 433 MHz
- ▶ IP Rating: IP20

SAFETY AND INSTALLATION INSTRUCTIONS

- ▶ This product is not a toy and is not suitable for children!
- ▶ The SIRO LED system is designed for indoor use.
- ▶ Unprotected outdoor use is not permitted.
- ▶ To avoid contact with moisture at all costs!

TECHNICAL DRAWING



LIGHT SWITCH

MINI 35

MILL-IN PUSH BUTTON 35 / 40 mm



Fig. in original size

Article No.

SL-PP40K1



Fig. in original size

Article No.

SL-PP40K60

PRODUCT FEATURES

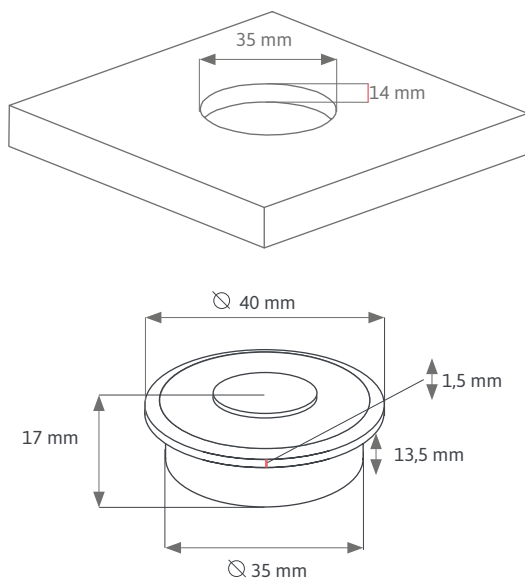
- ▶ Mini 35 - Push button for milling with 35 mm diameter.
- ▶ No battery and no wiring necessary!
- ▶ Battery-free device without external power supply.
- ▶ Transmission energy is generated from mechanical energy when the push button is pressed.
- ▶ Radio-based range of up to 80 meters outdoors and 30 meters (without mesh) in buildings.
- ▶ 1 button can be connected to any number of Push Power Receivers.
- ▶ Functions: ON - OFF - DIM for MONO receivers ON - OFF - DIM for DUO receivers and colour changes
- ▶ A changeover switch function is provided when several switches are used.
- ▶ Available in white (K60) and black (K1) versions

ASSEMBLY

- ▶ Can be milled with 35 mm cup hole drill
- ▶ Milling diameter 35 mm
- ▶ Milling depth: min. 14 mm



TECHNICAL DRAWING



DIMENSIONS

- ▶ Push button (DxH): 40 x 17 mm

TECHNICAL FEATURES

- ▶ Transfer protocol: RF 433 MHz
- ▶ IP Rating: IP20

SAFETY AND INSTALLATION INSTRUCTIONS

- ▶ This product is not a toy and is not suitable for children!
- ▶ The SIRO LED system is designed for indoor use.
- ▶ Unprotected outdoor use is not permitted.
- ▶ To avoid contact with moisture at all costs!

SCOPE OF DELIVERY

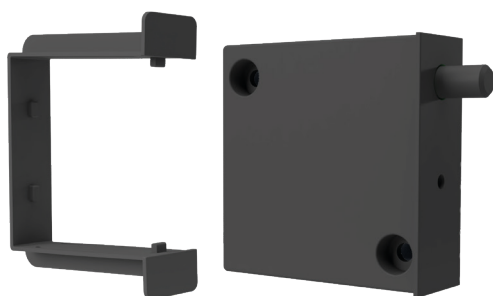
- ▶ Pushbutton
- ▶ Building ring



DOOR SENSOR

SL-PPDOOR01

SENSOR FOR HINGED DOORS AND DRAWERS

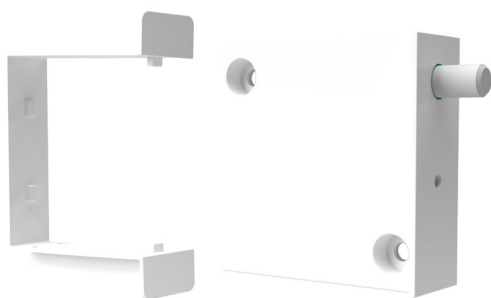


Article No.

SL-PPDOOR01K1

PRODUCT FEATURES

- ▶ Sensor for hinged doors and drawers.
- ▶ For milling, screwing or gluing.
- ▶ No battery and no wiring necessary!
- ▶ Battery-free device without external power supply.
- ▶ Transmission energy is generated from mechanical energy when the sensor contact point is actuated.
- ▶ Radio-based range of up to 80 meters outdoors and 30 meters (without mesh) in buildings.
- ▶ Sensor can be connected to any number of Push Power Receivers.
- ▶ Functions: ON - OFF for MONO and DUO receivers
- ▶ Can be combined with several sensors or switches
- ▶ Available in white (K60) and black (K1) versions



Article No.

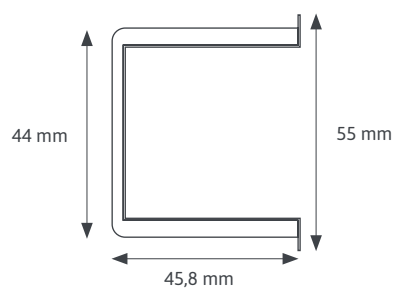
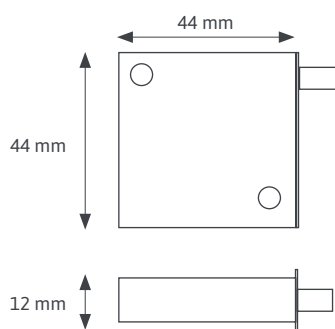
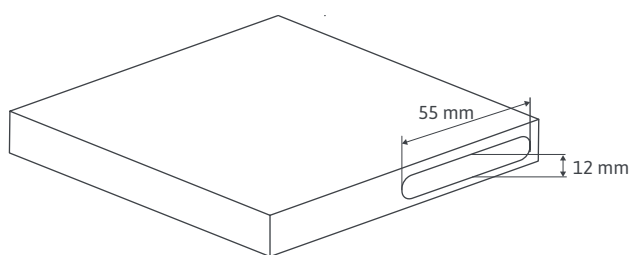
SL-PPDOOR01K60

ASSEMBLY

- ▶ Milling, screwing or gluing on. Placing the sensor on the door fitting side is recommended
- ▶ When milling, please note the technical milling diagram! Milling depth:
46.5 mm milling height: 12.0 mm milling width: 55,0 mm



TECHNICAL DRAWING



DIMENSIONS

- ▶ Sensor incl. adapter (LxDxH): 55 x 46 x 12 mm
- ▶ Sensor without adapter (LxWxH): 44 x 44 x 12 mm

TECHNICAL FEATURES

- ▶ Transfer protocol: RF 433 MHz
- ▶ IP Rating: IP20

SAFETY AND INSTALLATION INSTRUCTIONS

- ▶ This product is not a toy and is not suitable for children!
- ▶ The SIRO LED system is designed for indoor use.
- ▶ Unprotected outdoor use is not permitted.
- ▶ To avoid contact with moisture at all costs!

RECEIVER

RECEIVER:

The SIRO PUSHPOWER Receiver ("the brain") receives the Signals from the light switch wirelessly and converts them into control commands for the connected light source.

1) Connect:

- ▶ Connect the SIRO PUSHPOWER receiver to the power supply.
- ▶ Make sure the connection is secure and stable.
- ▶ For optimal voltage distribution, both connections are plugged in.

2) Check LED display: Check the LED indicator on the receiver. It indicates that the power supply is correct.

If the power supply is correct, the LED indicator lights up red when you press the pairing button.

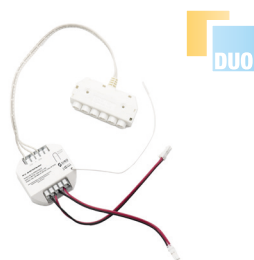
MONO: Control of mono LED strips that have a uniform colour temperature.



Article No.

SL-PPREC01MONO

DUO: Control of DUO-LED strips that can switch between two colour temperatures.



Article No.

SL-PPREC01DUO

Wireless plug: Wireless 230V control for flexible, quick and easy integration.



Article No.

SL-PPREC01AC-K60

SWITCH: Manual on/off switching of 230V products with a simple switch function



Article No.

SL-PPREC02SWITCH

TRIAC: Continuous dimming of 230V products for precise lighting control



Article No.

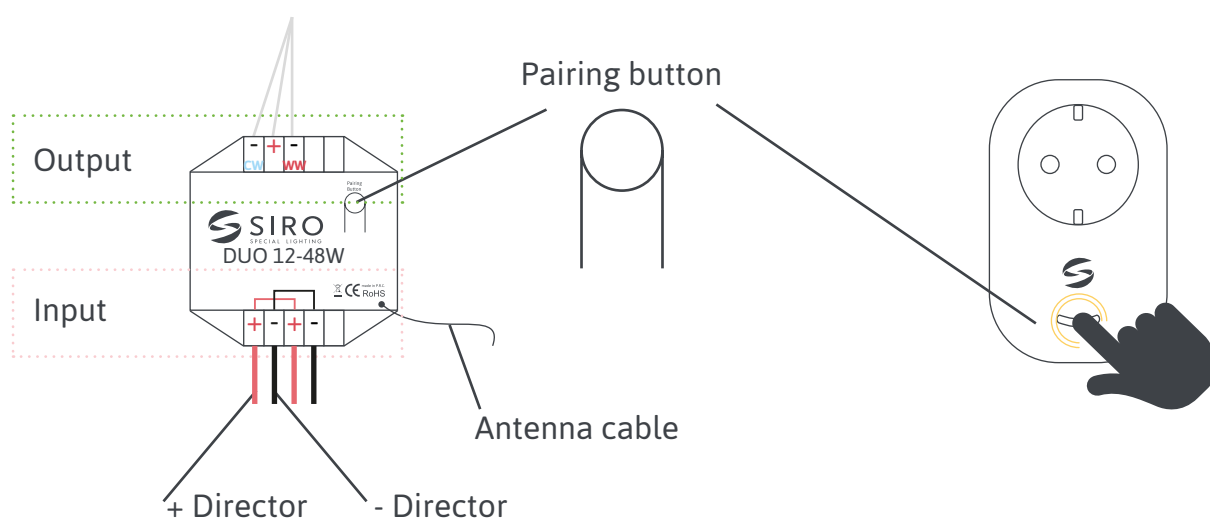
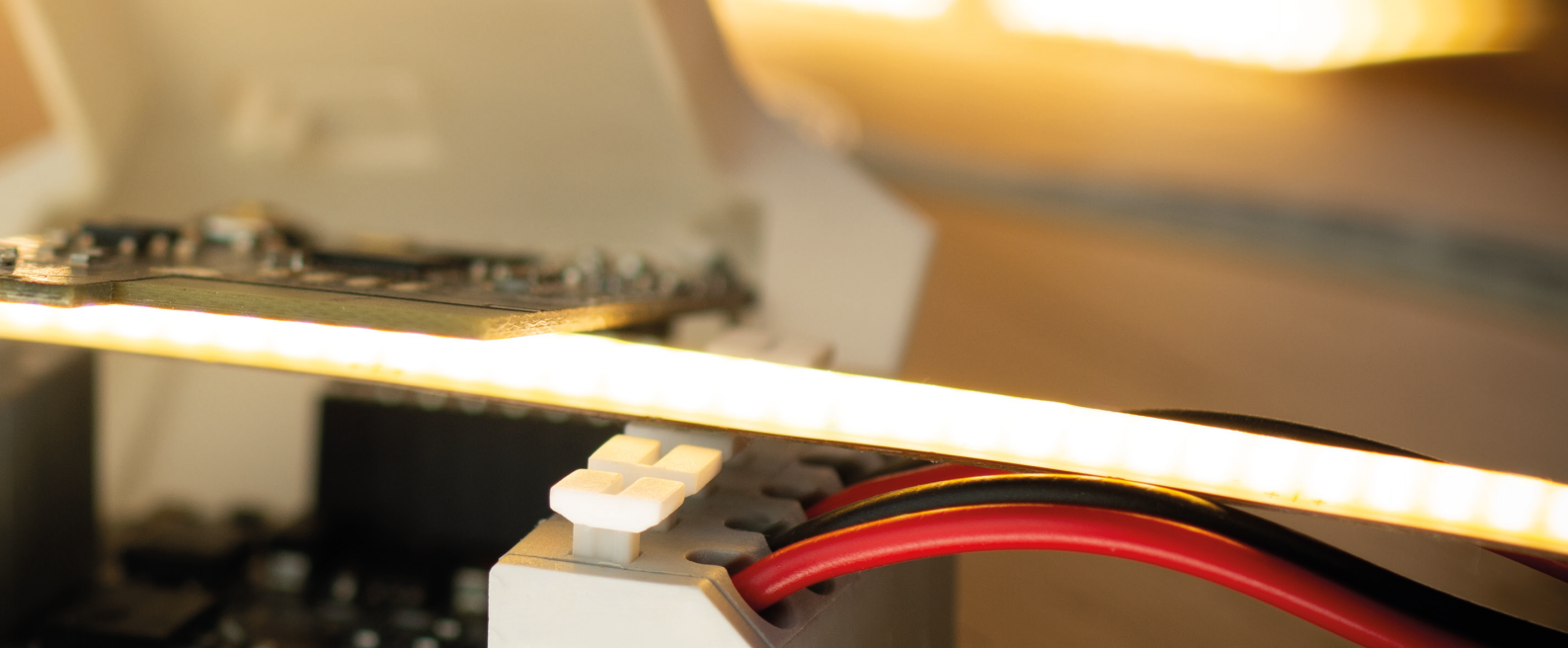
SL-PPREC02TRIAC

DIN-RAIL: for use on Top hat rail in the switch box

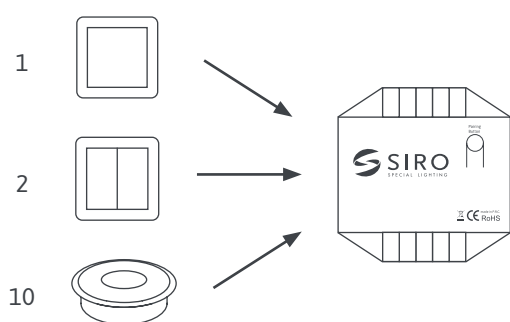


Article No.

SL-PPREC03RAIL2

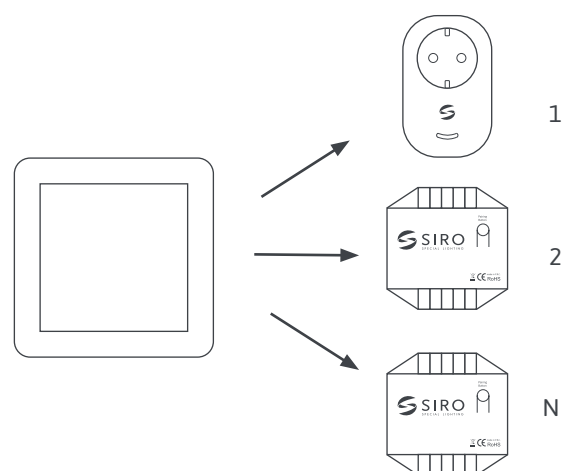


HOW CAN YOU COMBINE THE RECEIVERS?



Multiple controls on one receiver

maximum of 10 PushPower controls (sensors, push buttons, etc.) can be connected to a receiver. Every option counts.



One control on several receivers

1 PushPower control device can control any number of receivers.

Radio range (depending on the local conditions)

Radio-based range of up to 80 meters outdoors and 30 meters (without mesh) in buildings.

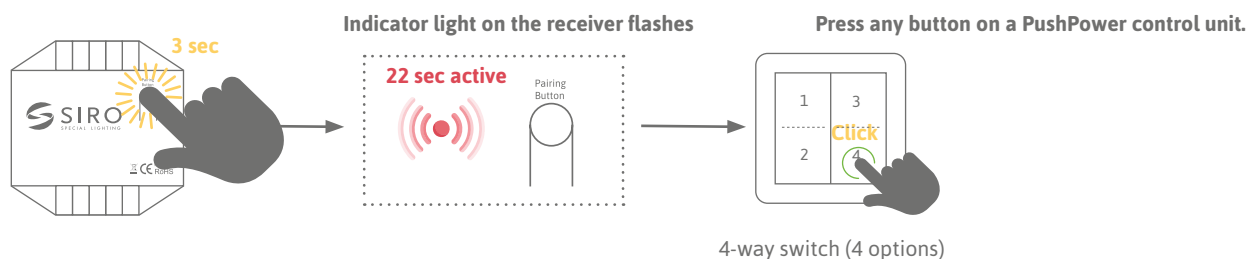


RECEIVER

THE MOST IMPORTANT FUNCTIONS AT A GLANCE

CONNECT (TEACH-IN) CONTROL UNIT (SWITCH) & RECEIVER

This is how you establish communication between the switch and your receiver:



press and hold for 3 seconds - The light starts to flash (heartbeat)

Activity mode remains active for 22 seconds, after which the teach-in process is canceled and the light switches off.

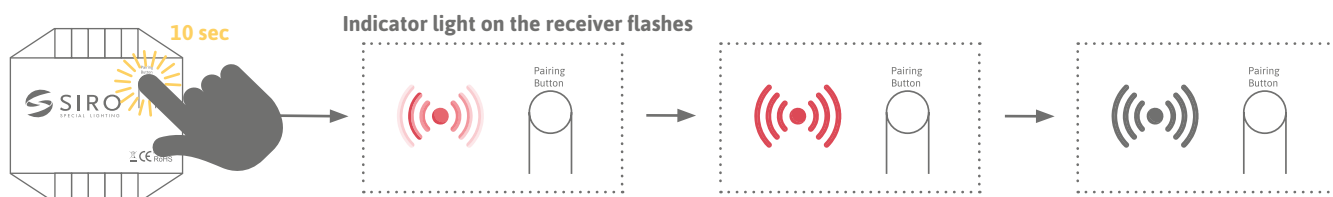
The learning process can be cancelled by disconnecting the power.

Each button/option (1&2) can be assigned its own function/option. If it is not assigned, this is a space bar.



With the DUO system, activating the first button (option 1) switches it to ON/OFF and the other button (option 2) automatically becomes the colour controller. When activating several switches, they act as toggle switches.

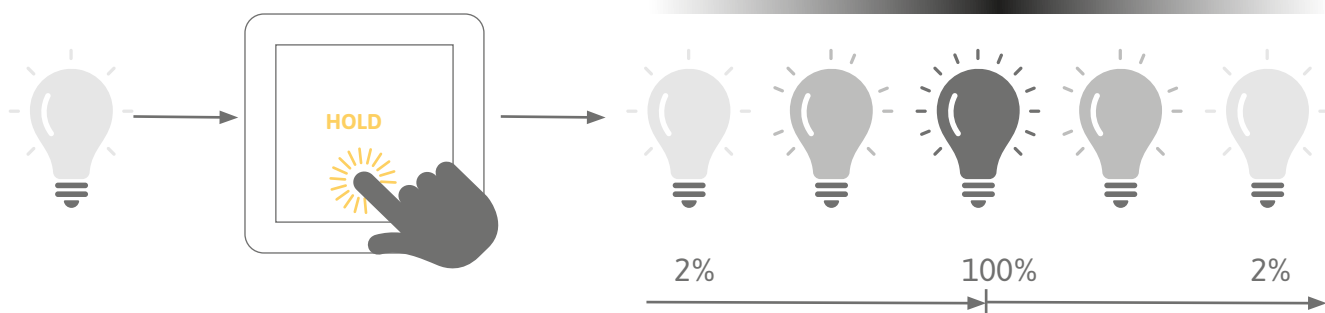
RESETTING THE RECEIVER / FACTORY STATUS



Press and hold for 10 seconds. All connections are now deleted and the receiver is ready for a new link.



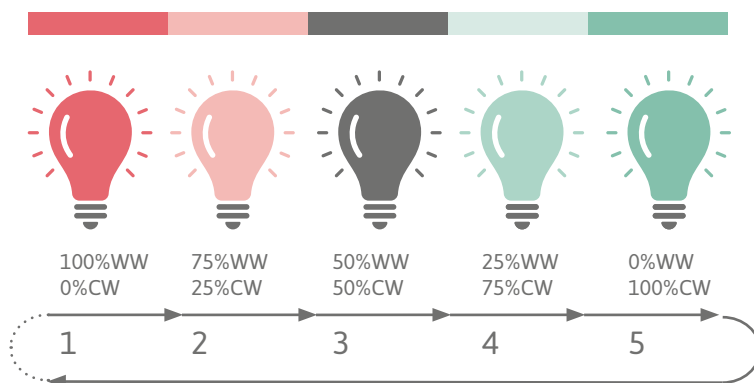
DIMMING: Press and hold when the light is switched on



COLOR TUNING WITH DUO RECEIVER

There are 5 settings:

- 1 ▶ 50% warm white (WW) / 50% cool white (CW)
- 2 ▶ 75% warm white (WW) / 25% cool white (CW)
- 3 ▶ 50% warm white (WW) / 50% cool white (CW)
- 4 ▶ 25% warm white (WW) / 75% cool white (CW)
- 5 ▶ 0% warm white (WW) / 100% cool white (CW)



NIGHT MODE: Press and hold when the light is off

Activate the night mode of our PushPower switches to ensure soft and dimmed lighting during the night. This function makes it possible to reduce the light to a comfortable level to avoid glare. A longer press (2 seconds) on the switch when it is switched off activates the night light with 2% brightness.

MEMORY FUNCTION

The system always remembers the last setting of the lighting situation before switching off. (power failure) The exception is night mode.

NETWORK PARTS

MONO | DUO 24 VDC

The power supply unit is a device that transforms 230V alternating current from the mains into direct current with a low voltage that can be used by electronic devices. It is the heart of many electrical systems - without a reliable power supply, the most brilliant circuits cannot develop their capabilities.

A well-dimensioned power supply unit is like a tailor-made suit - it fits the requirements of the system perfectly and ensures a smooth and efficient power supply without overloading or underloading.

1) Connect the power supply:

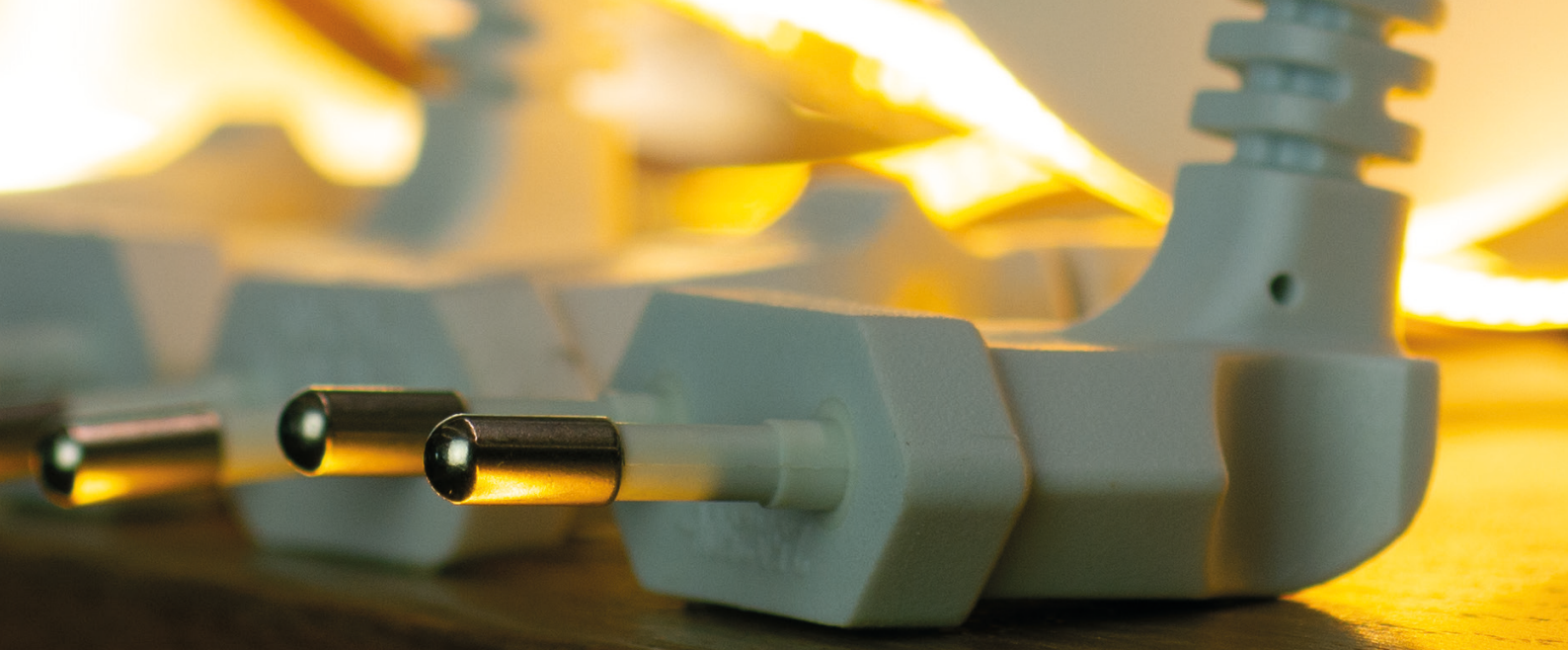
- ▶ Connect the power supply unit to a suitable power source (socket).
- ▶ Ensure that the socket and the power supply cable meet the technical requirements.

2) Voltage adjustment:

- ▶ Tailoring the power supply unit to suit the light sources used
- ▶ We recommend dimensioning the power supply unit up to 20% larger than the system performance achieved.
- ▶ As a result, the sum of the connected devices should be **20% below the maximum load** of the power supply unit/receiver.

3) Safety measures:

- ▶ Ensure that the power supply unit is protected from moisture and is located in a well-ventilated area.

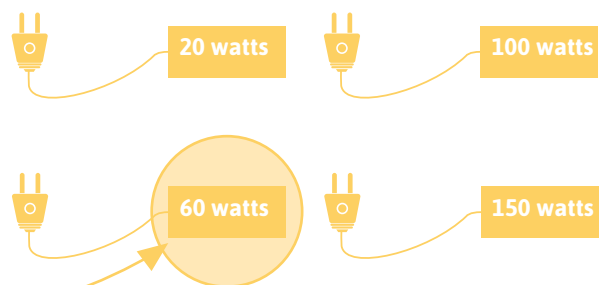


WHICH POWER SUPPLY UNIT IS REQUIRED?

Ex1:

We are using three LED strips SL-2M8C11W27-5MA with 11Watt/m for a project. 1 x 220 cm and 2 x 90cm

$$\begin{array}{rcl}
 1 \times 220 \text{ cm} & \rightarrow 2.2 \times 11 & = 24,2 \text{ watt} \\
 2 \times 90 \text{ cm} & \rightarrow (0.9+0.9) \times 11 & = 19,8 \text{ watt} \\
 \text{calculated system performance} & & \underline{\underline{44,0 \text{ watt}}} \\
 +20\% \text{ system buffer } (44 \times 1.20) & \rightarrow & \underline{\underline{52,8 \text{ watt}}}
 \end{array}$$

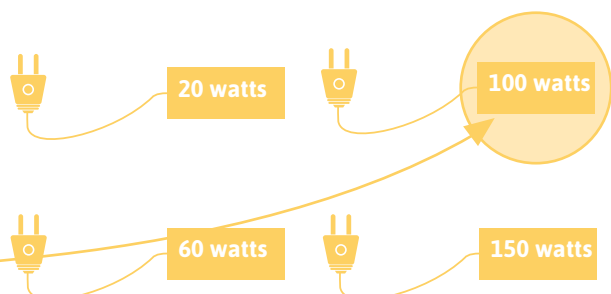


We therefore recommend a power supply unit with 60 watts. e.g.: SL-NT24CV60W-DB1

Ex2:

We are using three SL-SPOT06-DUO3W recessed spotlights with 2.5 watts and a 4m SL-2M8C11W27-5MA LED strip with 11 watts/m for a project

$$\begin{array}{rcl}
 3 \times 2.5 \text{ watt} & = & 7,5 \text{ watt} \\
 1 \times 400 \text{ cm} & \rightarrow 4 \times 11 & = 44,0 \text{ watt} \\
 \text{calculated system performance} & & \underline{\underline{51,5 \text{ watt}}} \\
 +20\% \text{ system buffer } (51.5 \times 1.20) & \rightarrow & \underline{\underline{61,8 \text{ watt}}}
 \end{array}$$



We therefore recommend a power supply unit with 100 watts. e.g.: SL-NT24CV100W-DB1

NETWORK PARTS

MONO | DUO 24 VDC

- ▶ Power supply for LED lamps with constant voltage (24 VDC)
- ▶ Protection class 2 against electric shock through direct & indirect contact
- ▶ IP 20 - suitable for indoor use
- ▶ Interruption, short-circuit, overload and overheating protection
- ▶ Standby < 0.3W
- ▶ 2000 mm connection cable with 90° angled Euro plug (230 VAC)
- ▶ 6-way distribution box with 250 mm connection cable for SIRO receivers



Article No.	Dimensions (LxWxH)	Power
SL-NT24CV20W-DB1	103 x 35,5 x 16	20 watts



Article No.	Dimensions (LxWxH)	Power
SL-NT24CV60W-DB1	159,9x57,8x18	60 watts



INPUT: 2000 mm connection cable with 90° angled Euro plug for the 230 VAC mains supply



OUTPUT: 6-way distribution box for the connection of SIRO receivers



PFC

**100
watt**

Article No.	Dimensions (LxWxH)	Power
SL-NT24CV100W-DB1	321x30x18,2	100 watts



PFC

**150
watt**

Article No.	Dimensions (LxWxH)	Power
SL-NT24CV150W-DB1	322,6x30x21,5	150 watts



Power Factor Correction Filter integrated in SIRO power supply units

LIGHTING

MONO

WHICH LIGHT IS NEEDED?

LINEAR LIGHT | MONO OR DUO?

SIRO's **mono lighting system** consists of LED strips with a single colour temperature. These LED strips produce a uniform light in a set colour temperature, be it warm white, neutral white or cool white. The mono lighting system is well suited for applications where a uniform light colour is desired, such as lighting work areas, furniture or shelves.

SIRO's **duo lighting system**, on the other hand, allows you to choose seamlessly between different colour temperatures. For example, a duo LED strip can produce both warm white and cool white light. This offers greater flexibility and versatility in lighting as you can adjust the light colour depending on your needs. The duo lighting system is particularly suitable for rooms in which different lighting moods are to be created, such as living rooms, dining areas or bedrooms.

Depending on the needs of your project, you can choose the right lighting system to create the desired atmosphere and optimize the functionality of your lighting.

2700K



3000K



4000K





BRIGHT WORKING LIGHT? (KITCHEN / OFFICE / WARDROBE)

For productive days and concentrated work, we offer you a selection of bright work lighting. Experience glare-free light that optimally illuminates your work environment and ensures maximum productivity.

If you are looking for a spot-free light, we recommend e.g. 15 Watt COB LED strips.

Article No.	Article description
SL-2M8C15W40-5MA	Cool white 15 watt COB LED tape (5 m)
SL-2M8C15W30-5MA	Warm white 15 watt COB LED strip (5 m) other lengths & variants available

MOOD LIGHTING (BEDROOM / BAR / LIVING ROOM)

Create a cozy atmosphere for sociable evenings, quiet hours or romantic moments for two. Light doesn't have to be bright to have a big effect. We recommend bands in the range 4-11 watts.

Article No.	Article description
SL-M2-CWW4W-5MA	Warm white 4 watt COB LED tape (5m) other lengths & variants available

EFFECT LIGHT IN FURNITURE (SHOWCASES / CABINETS)

Skillfully showcase your furniture and give your room that certain something with our furniture lighting. Thinner and more flexible LED strips are often used here, which can be easily installed into furniture. Highlight collectibles and works of art with spots and create a unique atmosphere in your home. We recommend e.g.: the dot-free 5mm Mono COB LED strip with 6 watts or MiniSpots

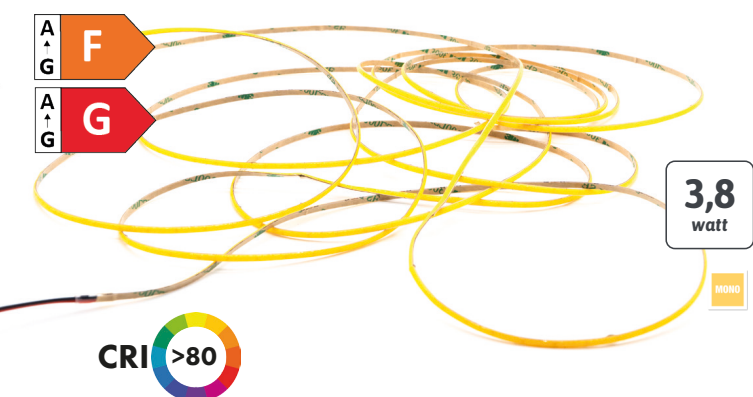
Article No.	Article description
SL-2M5C6W30-5MA	Warm white 6 watt MONO COB LED tape (5m)
SL-SPOT08-WW1W-PB12	Mono Mini 0.8 watt recessed spot (black) other lengths & variants available

MONO

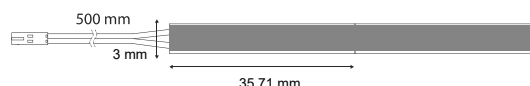
MONO

3 MM LED TAPES

SIRO LED WIRE - POINT FREE 3.8 WATT LED TAPE - 3MM WIDTHu



- ▶ Universally applicable, easy to process
- ▶ can be glued on or processed using a 3.2 mm wide saw blade
- ▶ Width: 3 mm, 3.6 mm with IP65
- ▶ Length: 1250 mm - 2500 mm - 5000 mm
- ▶ 24V DC - 3.8 watts / meter - COB chip
- ▶ 504 LEDs per meter, 270 - 315 lumens
- ▶ IP 20 (indoor) & IP65 (damp room)
- ▶ Colour temperature: 2700K - 3000K - 4000K
- ▶ 500 mm connection cable at both ends
- ▶ Can be used with One4all profile (p. 50).



Article No.	Led / M	light colour	CRI	Wide	Length	Cut	Volt	IP	Watt / M	Lumen / M	Energy
SL-M2-CNW4W-1250	504	4000K	80	3	1250	35.71	24	20	4	315	G
SL-M2-CNW4W-2500	504	4000K	80	3	2500	35.71	24	20	4	315	G
SL-M2-CNW4W-5000	504	4000K	80	3	5000	35.71	24	20	4	315	G
SL-M2-CWW4W-1250	504	3000K	80	3	1250	35.71	24	20	4	285	G
SL-M2-CWW4W-2500	504	3000K	80	3	2500	35.71	24	20	4	285	G
SL-M2-CWW4W-5000	504	3000K	80	3	5000	35.71	24	20	4	285	G
SL-M2-CXWW4W-1250	504	2700K	80	3	1250	35.71	24	20	4	275	G
SL-M2-CXWW4W-2500	504	2700K	80	3	2500	35.71	24	20	4	275	G
SL-M2-CXWW4W-5000	504	2700K	80	3	5000	35.71	24	20	4	275	G
SL-6M3C4W30-2500A	504	3000K	80	3,6	2500	35.71	24	65	4	285	G
SL-6M3C4W40-2500A	504	4000K	80	3,6	2500	35.71	24	65	4	315	G
SL-1M3C4W30-3MA	528	3000K	80	3	3000	22,73	12	20	4	400	F
SL-1M3C4W40-3MA	528	4000K	80	3	3000	22,73	12	20	4	420	F



LIGHT THAT UNLEASHES YOUR CREATIVITY!

Immerse yourself in the world of limitless design possibilities with the 3mm LED WIRE BAND. This innovative lighting strip was developed to give your furniture and rooms a unique ambience and spark your inspiration.

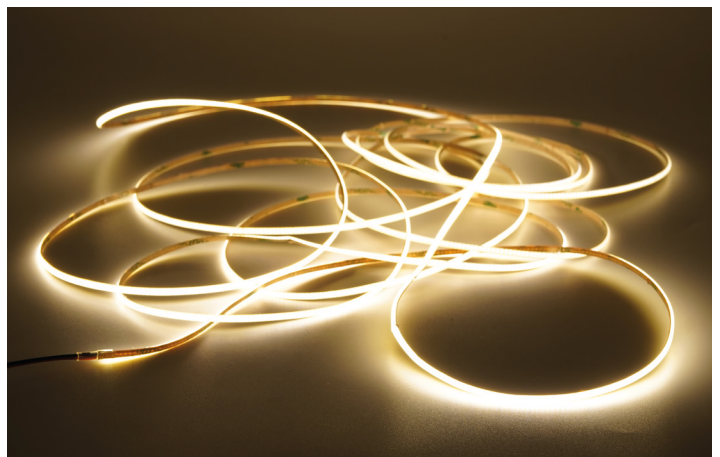
With its slim design and simple installation, the 3mm LED WIRE BAND is ideal for a wide range of applications. Whether in furniture, shelves, display cabinets or even as indirect room lighting - this strip adapts seamlessly to any environment and transforms it into a place of well-being and aesthetics.

What makes this tape so special?

The simple installation is the highlight of this product: you can simply cut the tape to the desired length every 35.71 mm and then stick it on or cut and install it using the Siro Flip Lens and a 3.2 mm wide saw blade. The belt is then connected to a Pushpower receiver and is immediately ready for use. Thanks to its flexible design options and energy-efficient LED technology, the 3mm LED WIRE BAND is the perfect choice for anyone who values high-quality lighting with minimal effort.

Areas of application

- ▶ Showcases
- ▶ Shelves
- ▶ Accent lighting
- ▶ indirect lighting in the bedroom



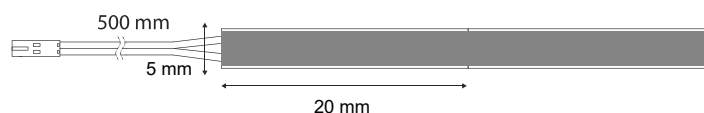
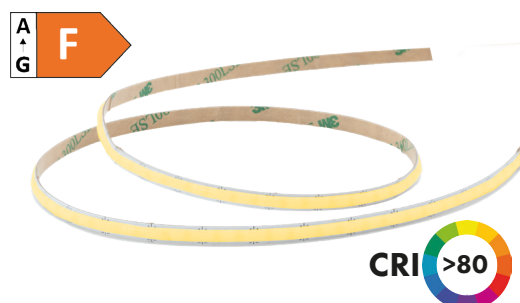
MONO

MONO

5 MM LED STRIPS

Spotless 5 mm MONO COB LED strip 6 Watt

- ▶ Universally applicable, easy to process
- ▶ can be glued on or processed using a saw blade or router
- ▶ Cutting width: 5 mm (+ 0.2 mm tolerance)
- ▶ Width: 5mm
- ▶ Length: 5000 mm or 20000 mm (20 m without connection cable)
- ▶ 24V DC - 6 watts / meter - COB chip
- ▶ 560 LEDs per meter, 560 - 600 lumens
- ▶ IP 20 (indoor)
- ▶ Colour temperature: 2700K - 3000K - 4000K
- ▶ 500 mm connection cable at both ends
- ▶ Can be used with Express 5 mm connection technology (p. 52).
- ▶ Can be used with optical silicone cover / FlipLens (p.53).
- ▶ Can be used with One4all profile (p. 50).



Connect the LED strip

The SIRO tapes can be contacted on the existing soldering pads every 20 mm using a solder or express clip connection.



Article No.	Led / M	light colour	CRI	Wide	Length	Cut	Volt	IP	Watt / M	Lumen / M	Energy
SL-2M5C6W27-5MA	504	2700K	80	5	5000	20,0	24	20	6	560	F
SL-2M5C6W27-20MA	504	2700K	80	5	20000	20,0	24	20	6	560	F
SL-2M5C6W30-5MA	504	3000K	80	5	5000	20,0	24	20	6	570	F
SL-2M5C6W30-20MA	504	3000K	80	5	20000	20,0	24	20	6	570	F
SL-2M5C6W40-5MA	504	4000K	80	5	5000	20,0	24	20	6	600	F
SL-2M5C6W40-20MA	504	4000K	80	5	20000	20,0	24	20	6	600	F



EXPERIENCE BRILLIANCE AND VERSATILITY

For more intense lighting, the 5mm MONO COB LED BAND with 6 watts is the perfect choice. This powerful strip not only offers excellent brightness, but also a wide range of applications, making it an indispensable element for any lighting installation.

With its compact design and powerful chip-on-board (COB) LED technology, the 5mm LED COB BAND is perfect for a wide range of applications. From accent lighting for furniture and display cabinets to general room lighting in living rooms, kitchens and offices, this strip offers the perfect balance between brightness and versatility.

The special feature of this strip is its exceptional brightness and colour rendering, which enables lively and natural lighting in any room. Whether you want to create a warm, cozy ambience or fill a room with bright, energetic light, the SIRO 5mm LED COB BAND gives you the flexibility to customize your lighting to suit your needs. Let your rooms shine in new splendor!

Areas of application

- ▶ Display cabinets & shelves
- ▶ Kitchen room lighting
- ▶ Office lighting
- ▶ Room lighting Closet room

MONO

MONO

8 MM LED TAPES

Spot-free 11 watt LED strip

- Universally applicable, easy to process
- can be used without heat sink (aluminum profile)
- Width: 8 mm, length: 5000 mm or 20000 mm
- 24 V DC - 11 watts / meter - COB chip
- 640 LEDs per meter, 1100 - 1210 lumens per meter
- IP 20 (indoor) & IP 65 (wet room)
- Colour temperature: 2700K - 3000K - 4000K
- 500 mm connection cable at both ends
- 20 meter version without connection cable
- Can be used with EXPRESS Connection System (p. 54)
- Can be used with One4all profile (p. 50).

11
watt

A
G F

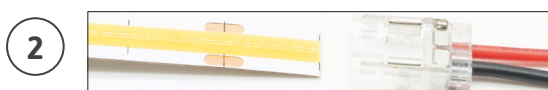
CRI >80



Connect the LED strip



1. The SIRO strips can be connected to the existing solder pads every 50 mm using a soldering or express clip connection.



2. In addition, the straps can be shortened every 12.5 mm at the black markings and contacted with Express Clips.

Article No.	Led / M	light colour	CRI	Wide	Length	Cut	Volt	IP	Watt / M	Lumen / M	Energy
SL-2M8C11W27-5MA	640	2700K	80	8	5000	12,5	24	20	11	1100	F
SL-2M8C11W30-5MA	640	3000K	80	8	5000	12,5	24	20	11	1155	F
SL-2M8C11W40-5MA	640	4000K	80	8	5000	12,5	24	20	11	1210	F
SL-2M8C11W30-20MA	640	3000K	80	8	20000	12,5	24	20	11	1155	F
SL-2M8C11W40-20MA	640	4000K	80	8	20000	12,5	24	20	11	1210	F
SL-6M8C11W27-5MA	640	2700K	80	8	5000	12,5	24	65	11	1100	F
SL-6M8C11W30-5MA	640	3000K	80	8	5000	12,5	24	65	11	1155	F
SL-6M8C11W40-5MA	640	4000K	80	8	5000	12,5	24	65	11	1210	F

Spot-free 15 watt LED strip

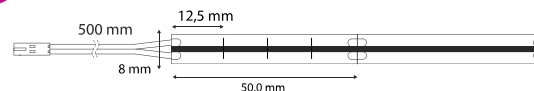
- ▶ Universally applicable, easy to process
- ▶ Can be used with heat sink / One4all profile (p. 50).
- ▶ Width: 8 mm, length: 5000 mm or 20000 mm
- ▶ 24 V DC - 15 watts / meter - COB chip
- ▶ 640 LEDs per meter, 1350 - 1500 lumens per meter
- ▶ IP 20 (indoor) & IP 65 (wet room)
- ▶ Colour temperature: 2700K - 3000K - 4000K
- ▶ 500 mm connection cable at both ends
- ▶ 20 meter version without connection cable
- ▶ Can be used with EXPRESS Connection System (p. 54)

15
watt

A
G F

A
G G

CRI >90



Article No.	Led / M	light colour	CRI	Wide	Length	Cut	Volt	IP	Watt / M	Lumen / M	Energy
SL-2M8C15W30-5MA	640	3000K	90	8	5000	12,5	24	20	15	1350	G
SL-2M8C15W40-5MA	640	4000K	90	8	5000	12,5	24	20	15	1500	F
SL-6M8C15W30-5MA	640	3000K	90	8	5000	12,5	24	65	15	1350	G
SL-6M8C15W40-5MA	640	4000K	90	8	5000	12,5	24	65	15	1500	F
SL-2M8C15W30-20MA	640	3000K	90	8	20000	12,5	24	20	15	1350	G
SL-2M8C15W40-20MA	640	4000K	90	8	20000	12,5	24	20	15	1500	F

Spotless 6 / 10 Watt MONO DUAL COB LED strip

- ▶ Universally applicable, easy to process
- ▶ can be used without heat sink (aluminum profile)
- ▶ Width: 8 mm, length: 5000 mm or 20000 mm (20 m without connection cable)
- ▶ 24 V DC - 6 watts / meter or 10 watts / meter - CSP chip
- ▶ 320 + 320 LEDs per meter, 900 or 1100 lumens per meter
- ▶ IP 20 (indoor)
- ▶ 3000K or 4000K colour temperature selectable by changing the cable polarity
- ▶ 500 mm connection cable at both ends
- ▶ Can be used with EXPRESS Connection System (p. 54)
- ▶ Can be used with One4all profile (p. 50).

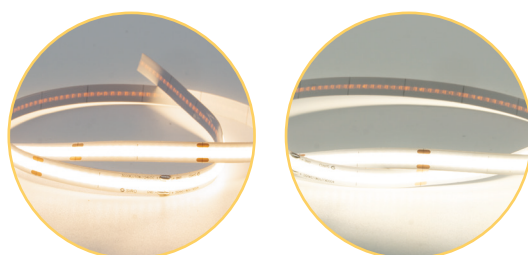
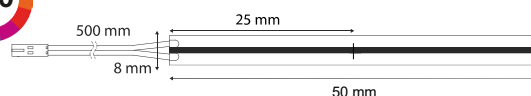
6
watt

10
watt

A
G F

A
G G

CRI >90



3000K

4000K

3000K ← + 24 VDC Connection cable



→ 4000K
+ 24 VDC Connection cable

Article No.	Led / M	light colour	CRI	Wide	Length	Cut	Volt	IP	Watt / M	Lumen / M	Energy
SL-2M8C10W3040-5MA	320+320	3000K 4000K	90	8	5000	25,0	24	20	10	900 1100	G F
SL-2M8C10W3040-20MA	320+320	3000K 4000K	90	8	20000	25,0	24	20	10	900 1100	G F
SL-2M8C6W3040-5MA	320+320	3000K 4000K	90	8	5000	25,0	24	20	6	540 660	G F
SL-2M8C6W3040-20MA	320+320	3000K 4000K	90	8	20000	25,0	24	20	6	540 660	G F

MONO

MONO

FLEXLINE FOR 8 MM

MONO FLEXLine

- ▶ Silicone profile for 8 mm wide MONO LED strips
- ▶ 500 mm cable with white LED plug
- ▶ Controllable and dimmable
- ▶ Colour temperature optionally 3000K WarmWhite or 4000K NeutralWhite
- ▶ High colour rendering CRI>95
- ▶ Lumen output: 287 lm (WarmWhite) or 300 lm (NeutralWhite)
- ▶ Beam angle: 70°
- ▶ IP 65 suitable for damp or indoor areas
- ▶ 8 predefined lengths available
- ▶ Can be shortened individually, pitch every 50 mm
- ▶ Application: Installation with 6 x 12 mm or as a surface-mounted solution with Flexline fixing clips.
- ▶ Recommended bending radius from 6 mm

9,6
watt



CRI >90

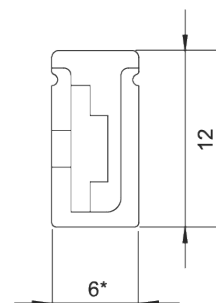


FLEXLine warm white

Article No.	Length	light colour
SL-FLEX-WW10W-450	450 mm	3000K
SL-FLEX-WW10W-600	600 mm	3000K
SL-FLEX-WW10W-900	900 mm	3000K
SL-FLEX-WW10W-1200	1200 mm	3000K
SL-FLEX-WW10W-1500	1500 mm	3000K
SL-FLEX-WW10W-2000	2000 mm	3000K
SL-FLEX-WW10W-2500	2500 mm	3000K
SL-FLEX-WW10W-3000	3000 mm	3000K

FLEXLine neutral white

Article No.	Length	light colour
SL-FLEX-NW10W-450	450 mm	4000K
SL-FLEX-NW10W-600	600 mm	4000K
SL-FLEX-NW10W-900	900 mm	4000K
SL-FLEX-NW10W-1200	1200 mm	4000K
SL-FLEX-NW10W-1500	1500 mm	4000K
SL-FLEX-NW10W-2000	2000 mm	4000K
SL-FLEX-NW10W-2500	2500 mm	4000K
SL-FLEX-NW10W-3000	3000 mm	4000K



Before processing, a
Test milling is recommended



LIMITLESS VERSATILE APPLICATIONS

The SIRO MONO Flexline strip is an innovative solution for indirect lighting in a wide range of applications. With its flexible silicone profile and integrated LED strips, it offers numerous options for lighting your rooms. It is ideal for accent lighting on furniture, shelves, niches, display cabinets and more. Thanks to its flexible design, it can be easily bent around small radii to create even and soft lighting.

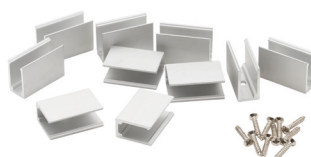
Use it to create an atmospheric ambience in your living room by installing it along the ceiling strip. Or use it to equip your kitchen worktops with glare-free and efficient lighting. The FLEXLine strip can also create a relaxing atmosphere in the bathroom by installing it along the bathtub, behind the mirror or under the cupboards.

The advantages of the SIRO MONO FLEXLine belt at a glance:

- ▶ Flexible silicone profile for easy installation around corners and edges
- ▶ Integrated LED strips for even and soft lighting
- ▶ Versatile application options
- ▶ Creates an atmospheric ambience and inviting lighting effects
- ▶ High-quality materials and first-class workmanship

FLEXLINE MOUNTING CLAMPS

10 pieces mounting clamps
for 6 mm wide Flexline (incl. mounting screws)



Article No.

SL-FLEX-KL1206-SET1

DUO



DIAMOND SERIES

DUO DIAMOND LED strip

- ▶ 9.6 - 24 watts / meter
- ▶ Extremely small and robust LED chip design (SMD microchip)
- ▶ Brilliant light quality with color rendering of CRI 95 / 90 and luminous flux of 850 - 2280 lumens per meter
- ▶ Can be used universally thanks to simple bonding to aluminum profiles
- ▶ Can be used without heat sink (aluminum profiles)
- ▶ Can be used in conjunction with SIRO Flexline silicone profile
- ▶ 500 mm soldered connection cable with Siro DUO plug at both ends
- ▶ Protection class: IP 20
- ▶ Can be controlled & dimmed with SIRO SL-PPREC01DUO



BRILLIANT LIGHTING FOR BRILLIANT MOMENTS

The SIRO DUO LED series "DIAMOND" impresses with its brilliant lighting, durability and energy efficiency. With a wide range of possible applications and high flexibility, it is the perfect choice for high-quality lighting solutions.

Article No.	Led / M	light colour	CRI	Wide	Length	Cut	Volt	IP	Watt / M	Lumen / M	Energy
SL-DUO-10W-5000	140	2700 - 6000 K	>95	8	5000	100	24V DC	20	9,6	850	G
SL-DUO-A17W-5000	196	1700 - 5000K	>95	8	5000	71,4	24V DC	20	16,8	1150	G
SL-DUO-17W-5000	196	2700 - 6000K	>95	8	5000	71,4	24V DC	20	16,8	1400	G
SL-DUO2-24W-5000	280	2700 - 6000K	90	8	5000	50	24V DC	20	24	2280	G



DISCOVER THE VERSATILITY OF DUO

The SIRO DUO system offers you an innovative solution for lighting your rooms with unparalleled versatility and performance. With its unique design and numerous advantages, it is the perfect choice for various applications.

Thanks to the option of choosing between two different colour temperatures, the DUO system allows you to customize the lighting according to your needs and preferences. From warm, cozy light for relaxing evenings to bright, cool light for concentrated work - with the DUO system you have full control over the atmosphere in your rooms.

The DUO system can be used in a wide range of applications in homes, offices, stores and much more. Use it to provide your living spaces with atmospheric lighting, to optimally illuminate your working environment or to present your products attractively in a store. The possible applications are almost unlimited. With the SIRO DUO system, you not only enjoy first-class lighting, but also maximum flexibility and convenience. Experience the benefits of this innovative lighting system now and transform your rooms into true oases of well-being.

Areas of application

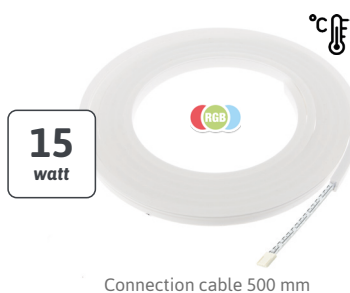
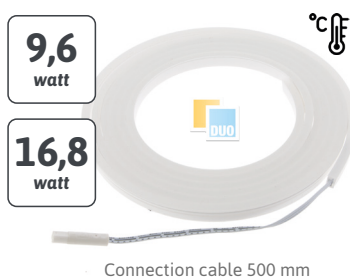
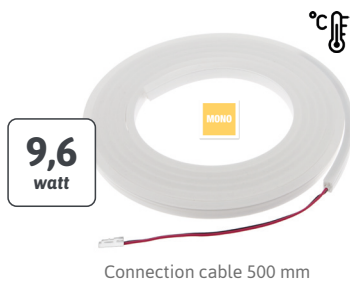
- ▶ Product lighting in stores
- ▶ Gastronomy and hotel industry
- ▶ Exhibition rooms and galleries
- ▶ Wellness areas and spas
- ▶ Living spaces, offices & workplaces



DUO



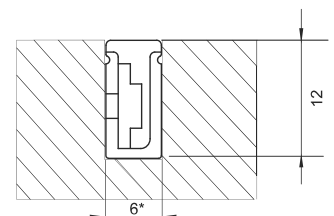
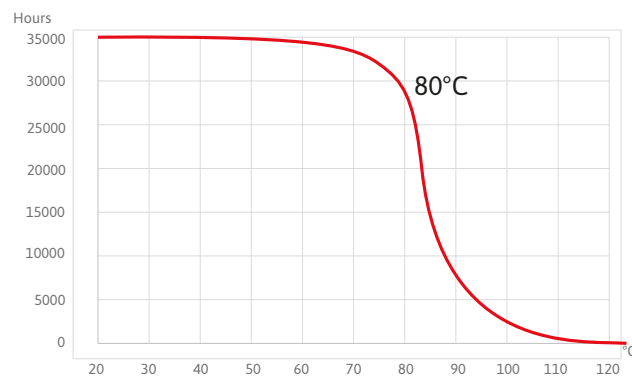
FLEXLINE



SIRO FLEXLINE // MONO - DUO - RGB

- ▶ Silicone profile (width: 6 mm, height: 12 mm) with 8 mm wide SIRO LED strips
- ▶ uniform and soft light (lateral light channel)
- ▶ dimmable and controllable with SIRO MONO - DUO - RGB Receiver
- ▶ can be milled in or used as a superstructure
- ▶ extremely heat-resistant, ideal for use in saunas
- ▶ FLEXLine IP67, IP20 at the ends (can be sealed with silicone to increase the IP value)
- ▶ various LED strip types available
- ▶ MONO - fixed colour temperature // DUO - changeable colour temperature // RGB
- ▶ Lengths from 450 mm to 3000 mm available
- ▶ including 500 mm connection cable
- ▶ individually configurable via lighting configurator

TEMPERATURE / LIFETIME chart (e.g.: sauna)



*Vor der Verarbeitung wird eine Probefräsung empfohlen



DISCOVER THE VERSATILITY OF THE SIRO FLEXLINE!

The SIRO FLEXLine is the ideal solution for uniform and soft lighting in a wide range of applications. This silicone profile, with a width of 6 mm and a height of 12 mm, is perfect for use with 8 mm wide SIRO LED strips.

Thanks to its side light channel, the FLEXLine produces an even and soft light that creates a pleasant atmosphere. Get full control over light intensity and colour temperature.

The FLEXLine can be milled in or used as a structure, which makes its installation versatile and uncomplicated. It is also extremely heat-resistant and therefore ideal for sauna applications.

With an IP67 protection, the FLEXLine is protected against dust and water, while its ends can be sealed with silicone to increase the IP value. Available in various lengths from 450 mm to 3000 mm and with different LED strip types, the FLEXLine offers maximum flexibility for your lighting projects.

Discover the possibilities of the SIRO FLEXLine and configure it according to your individual requirements with our lighting configurator!

Article No.	Article description	Lumen
SL-FLEX-AWW10W-*	9.6 Watt Diamond Stripe - 1700K - Candlelight	180 lumens
SL-FLEX-XWW10W-*	9.6 Watt Diamond Stripe - 2700K - Extra warm white	280 lumen
SL-FLEX-WW10W-*	9.6 Watt Diamond Stripe - 3000K - Warm white	287 lumen
SL-FLEX-NW10W-*	9.6 Watt Diamond Stripe - 4000K - Neutral white	300 lumen
SL-FLEX-HXWW10W-*	9.6 Watt GT Stripe - 2700K - Extra warm white	433 lumen
SL-FLEX-HWW10W-*	9.6 Watt GT Stripe - 3000K - Warm white	460 lumen
SL-FLEX-HNW10W-*	9.6 Watt GT Stripe - 4000K - Neutral white	517 lumen
SL-FLEX-DUO10W-*	9.6 Watt DUO Diamond Stripe - 2700-6000K	242 lumen
SL-FLEX-DUOA17W-*	16.8 Watt DUO Diamond Stripe - 1700-5000K	417 lumen
SL-FLEX-DUO17W-*	16.8 Watt DUO Diamond Stripe - 2700-6000K	484 lumen
SL-FLEX-RGB15W-*	15 Watt RGB Diamond Stripe	183 lumen

*450 mm, 600 mm, 900 mm, 1200 mm, 1500 mm, 2000 mm, 2500 mm, 3000 mm

e.g: SL-FLEX-WW10W in 1200 mm = Art.No. SL-FLEX-WW10W-1200

SPOTS



MONO MINI recessed spot 0.8 watts

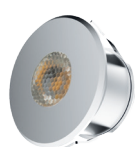
- ▶ Recessed LED spotlight with 0.8 watts
- ▶ Extremely small design / low installation depth
- ▶ Lumen output: 60 lm (warm white) / 70 lm (neutral white)
- ▶ 2000 mm supply cable with white LED plug
- ▶ Recessed light with Ø 22 mm and 14.5 mm height
- ▶ Installation diameter: 18 mm
- ▶ Colour temperature either 3000K or 4000K
- ▶ IP 20 suitable for indoor use
- ▶ Beam angle: 45°
- ▶ can be used in combination with the SIRO Mono RECEIVER SL-PPREC01MONO (ON-OFF-DIMMING)

0,8
watt

A
A
G
F

A
A
G
G

CRI >80



Aluminium Natural



black matt

Image in original size

Article No.

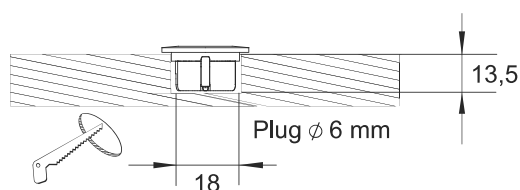
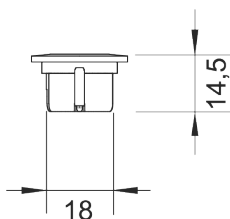
SL-SPOT08-NW1W-AL73
SL-SPOT08-NW1W-PB12
SL-SPOT08-WW1W-PB12

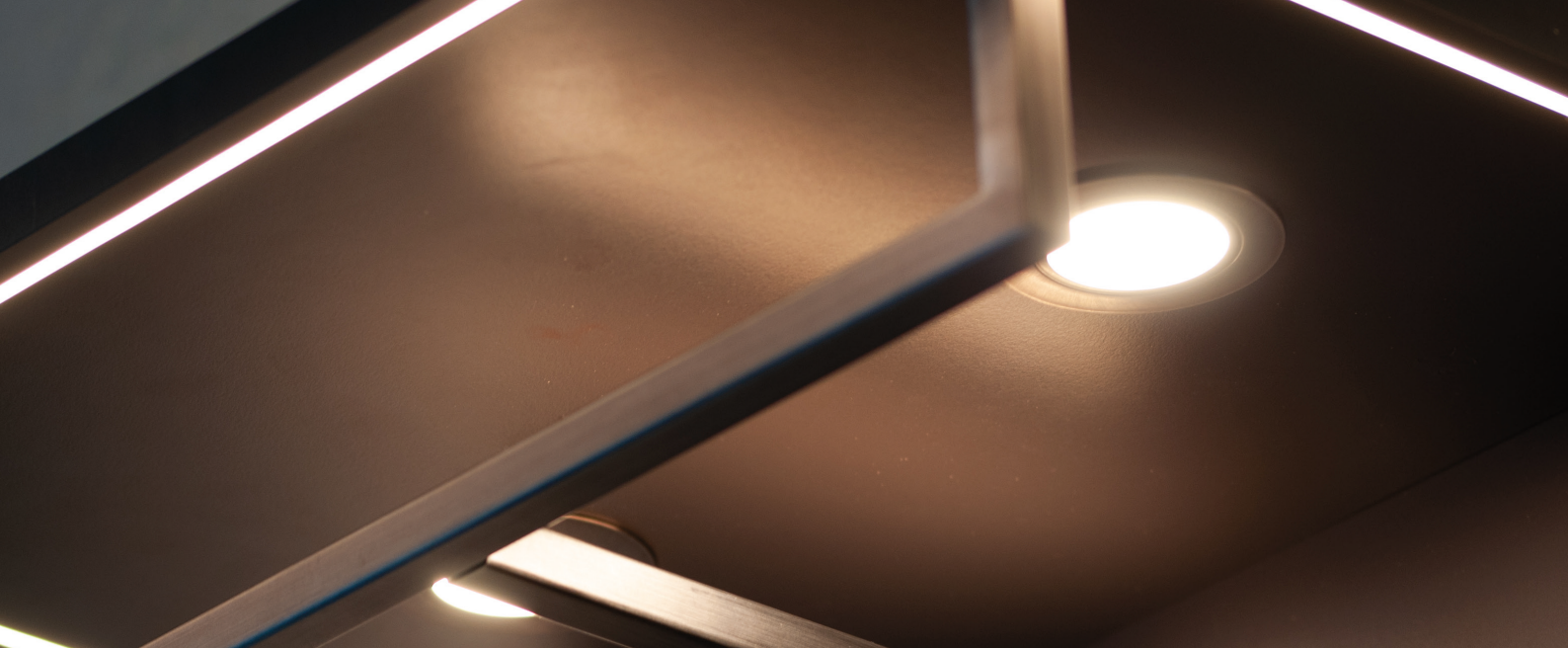
Article description

4000K SPOT (aluminum natural)
4000K SPOT (black)
3000K SPOT (black)

Areas of application

- ▶ Showcases
- ▶ Kitchen niche
- ▶ Top floors
- ▶ Shelves





MONO & DUO recessed spotlight 2.5 watts

- ▶ Recessed LED spotlight with 2.5 watts
- ▶ Colour temperature either 3000K or 4000K
- ▶ CRI > 80
- ▶ Lumen output: 200 (WarmWhite) to 210 lumens (NeutralWhite)
- ▶ IP44 or IP 20 suitable for indoor use
- ▶ 2000 mm supply cable with white LED plug
- ▶ Beam angle: 120°
- ▶ Recessed light with Ø 68 mm and 12 mm height
- ▶ Installation diameter: 55.57 mm
- ▶ can be used in combination with the SIRO Mono RECEIVER SL-PPREC01MONO (ON-OFF-DIMMING)

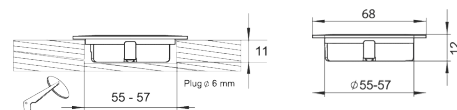


One spot - 7 colours!

Discover the ultimate solution for stylish lighting in any room!
Our spotlights combine modern design, first-class quality and maximum functionality.
Bring light into every area. With a variety of styles and colours, our spotlights offer the flexibility to blend perfectly into any setting. Highlight areas and let your room concept shine!

Areas of application

- ▶ Showcases
- ▶ Shelves
- ▶ Furniture wreath



MONO recessed spot 2.5 watts

Neutral white / Article No.

SL-SPOT06-NW3W-ZN79
SL-SPOT06-NW3W-ZN75
SL-SPOT06-NW3W-ZN21
SL-SPOT06-NW3W-ZN1
SL-SPOT06-NW3W-ZN5
SL-SPOT06-NW3W-PB12
SL-SPOT06-NW3W-PB1

Warm white / Article No.

SL-SPOT06-WW3W-ZN79
SL-SPOT06-WW3W-ZN75
SL-SPOT06-WW3W-ZN21
SL-SPOT06-WW3W-ZN1
SL-SPOT06-WW3W-ZN5
SL-SPOT06-WW3W-PB12
SL-SPOT06-WW3W-PB1

DUO recessed spotlight 2.5 watts

DUO / Article No.

SL-SPOT06-DUO03W-ZN79
SL-SPOT06-DUO03W-ZN75
SL-SPOT06-DUO03W-ZN21
SL-SPOT06-DUO03W-ZN1
SL-SPOT06-DUO03W-ZN5
SL-SPOT06-DUO03W-PB12
SL-SPOT06-DUO03W-PB1

Colour

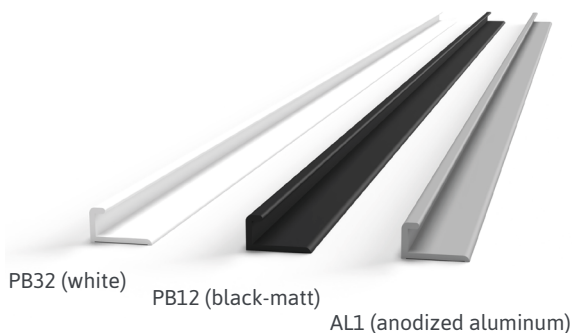
black brushed brass
iron colored brushed matt
stainless steel effect
shiny chrome
shiny brass
black
white



PROCESSING

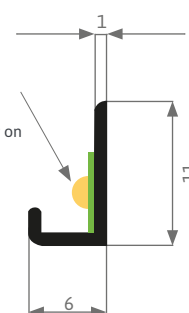
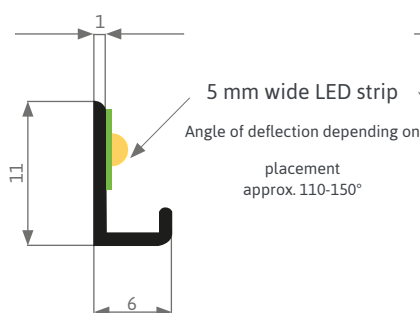
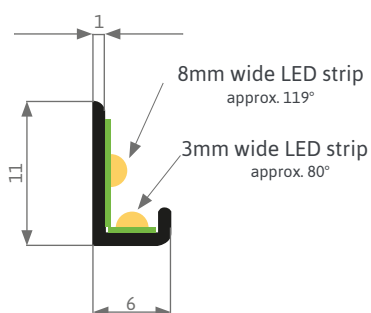


ONE4ALL PROFILE

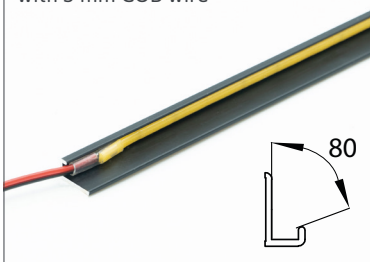


one4all - Aluminum profile 3 MM, 5 MM, 8 MM

- ▶ Elegant and versatile
- ▶ Quick installation thanks to simple bonding in the furniture - high adhesion of the adhesive backing!
- ▶ Glue in the LED strip - remove the adhesive backing from the profile - stick the profile in the desired position.
- ▶ Slim design - fits perfectly into any interior and is ideal for shelves, cabinets or display cabinets
- ▶ The profile can be processed horizontally or vertically
- ▶ Can be used with 3 mm SIRO COB Wire, 5 mm or 8 mm wide LED strips.
- ▶ Available in matt black (PB12), matt white (PB32) or anodized aluminium (AL1).
- ▶ Perfect lighting without a cover: Our LED aluminum profile was specially developed for furniture lighting and offers a beam angle that is particularly suitable for this purpose. Without a cover, no light is lost and the lighting is particularly effective and efficient
- ▶ Available in 2000 mm or 2950 mm length



Processing
with 3 mm COB wire



Processing
with 8 mm MONO COB tape



Areas of application

- ▶ Kitchen work lighting
- ▶ Pedestal lighting
- ▶ indirect room lighting
- ▶ Work surface lighting
- ▶ Lighting solution in shelves, cupboards and showcases



SIRO one4all Profile - The all-rounder among the profiles!

An elegant solution for versatile lighting requirements! You only need one profile, which you keep in stock and can quickly implement numerous lighting situations. With its slim design and the option of quick installation by simply gluing it into the furniture, the One4all profile is the ideal choice for your stylish furniture lighting.

Thanks to the high-quality adhesive backing, the profile adheres firmly to any surface and makes it easy to attach LED strips. Plinth lighting, indirect lighting in the carcass, bright task lighting, side lighting for tall units, shelves, display cabinets,...

The Siro One4all profile is versatile and can be used both horizontally and vertically. It is compatible with 3 mm SIRO COB Wire as well as 5 mm and 8 mm wide LED strips. Available in elegant black matt, white matt or elegant aluminum anodized finish, the profile blends seamlessly into any interior and is ideal for shelves, cabinets or showcases.

Experience perfect lighting without a cover - the LED aluminum profile specially developed for furniture lighting offers an optimum beam angle so that no light is lost and the lighting is particularly effective and efficient. Available in lengths of 2000 or 2950 mm, the SIRO One4all profile offers the ideal solution for your lighting projects. We recommend mounting at the front for optimum illumination of the body.

Discover the versatility and elegance of the Siro One4all profile today!

Article No.	Length	Product dimensions (LxWxH)	Colour	Packaging Unit
SL-PR148AL1-2M-V10	2000	2000 x 11 x 6 mm	Anodized aluminum	10
SL-PR148AL1-3M-V10	2950	2950 x 11 x 6 mm	Anodized aluminum	10
SL-PR148PB12-2M-V10	2000	2000 x 11 x 6 mm	black-matt	10
SL-PR148PB12-3M-V10	2950	2950 x 11 x 6 mm	black-matt	10
SL-PR148PB32-2M-V10	2000	2000 x 11 x 6 mm	white-matt	10
SL-PR148PB32-3M-V10	2950	2950 x 11 x 6 mm	white-matt	10

PROCESSING



FLIPLens FOR 3 MM

SIRO FLIPLens - precise light control / great results!

SIRO FLIPLens is the perfect solution for precise and effective lighting control in your lighting projects. These optical silicone covers offer clear and opal light refraction options, giving you a wide range of possibilities for designing your lighting.

One silicone cover - many impressive options.

With a clear optic, which can be processed with a 3.2 mm wide saw blade, and an opal optic, which can be processed with a 4 mm wide cutting or milling width, the FLIPLens enable different beam angles through different cutting depths. This allows you to direct the light exactly where you need it.

Another advantage of the FLIPLens is the sealing function of the cut edge, which ensures optimum light output and at the same time provides an aesthetically pleasing appearance. You can use the FLIPLens in combination with 3 mm wide SIRO LED WIRE to create impressive lighting effects. The desired length of the FLIPLens can easily be cut with scissors or a knife, making it particularly easy to adapt to different projects. With a high light transmission of 99% for the clear version and 75% for the opal version, FLIPLens offer outstanding light quality for every application.

Discover the wide range of applications for SIRO FLIPLens and take your lighting project to the next level!

Stamp roller for FLIPLens & LED WIRE

Rolling in 3mm wide MONO COB Wire Led tapes for flush processing.

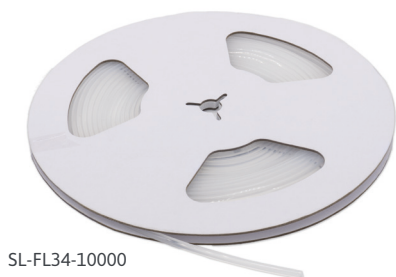


Article No.

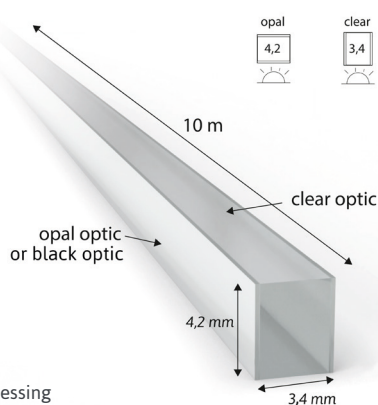
SL-TOOL-FL01



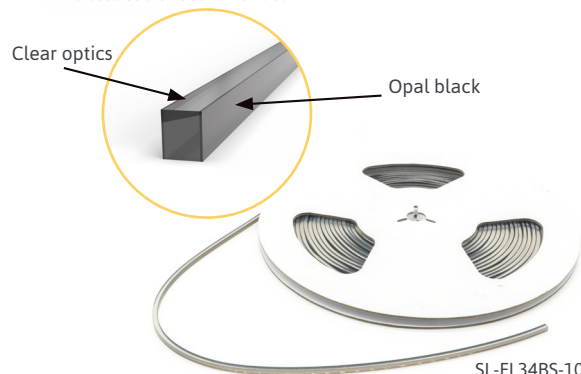
FLIPLENS - optical silicone cover for 3 mm SIRO LED WIRE



SL-FL34-10000



Before processing
a test cut is recommended



SL-FL34BS-10000
Black Series Edition

- ▶ optical silicone cover with clear and opal light refraction
- ▶ Clear optics can be processed with a 3.2 mm wide saw blade
- ▶ Opal optics can be processed with 4 mm cutting or milling width
- ▶ different beam angles due to different cutting depths
- ▶ FLIPLens enables a sealing function of the cutting edge
- ▶ to be used in combination with 3 mm wide SIRO LED WIRE
- ▶ the desired length can be cut with scissors or a knife
- ▶ Packaging Unit: 1 piece
- ▶ Total length:..... 10.000 mm
- ▶ Width "Clear":..... 3,4 mm
- ▶ Width "Opal" or "Black":..... 4,2 mm
- ▶ Light transmission "Clear"99%
- ▶ Light transmission "Opal" 75%

Milling depth & beam angle

- ▶ 3.2 x 5 mm:..... ~ 65° | -160°
- ▶ 3.2 x 7 mm:..... ~ 45° | -160°
- ▶ 3.2 x 9 mm:..... ~ 25° | -160°

CLEAR OPAL

Recommended width and depth for flush installation

- ▶ 3,2 x 6 mm:..... Clear optics
- ▶ 3.8 x 6 mm:..... Opal / black optics

Article No.	Length	Width Clear	Width Opal / Black
SL-FL34-10000	10.000 mm	3,4 mm	4,2 mm
SL-FL34BS-10000	10.000 mm	3,4 mm	4,2 mm

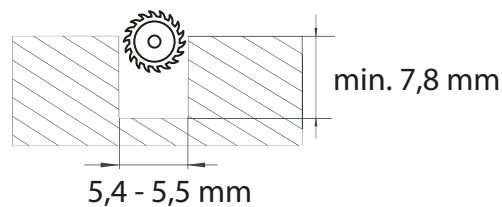
PROCESSING



FLIPLENS FOR 5 MM

FLIPLENS - optical silicone cover for 5 mm SIRO LED WIRE

- ▶ optical silicone cover with clear and opal light refraction
- ▶ Clear optics or opal optics with 5.4 - 5.5 mm cutting or milling width
- ▶ different beam angles due to different cutting depths
- ▶ FLIPLens enables a sealing function of the cutting edge
- ▶ to be used in combination with 5 mm wide LED
- ▶ the desired length can be cut with scissors or a knife
- ▶ Packaging Unit: 1 piece
- ▶ Total length: 10.000 mm
- ▶ Width "Clear" 5.6 mm (+/- 0.2 mm)
- ▶ Width "Opal" / "Black" 5.6 mm (+/- 0.2 mm)
- ▶ Translucency "Clear" 99% | 60%
- ▶ Translucency "Opal" 75% | 25%



SL-FL5658-10000



SL-FL5658BS-10000

Article No.	Length	Wide	Color
SL-FL5658-10000	10.000 mm	5.6 x 5.6 mm Clear	Opal / Black
SL-FL5658BS-10000	10.000 mm	5,6 x 5,6 mm	

Stamp roller for FLIPLens



Article No.

SL-TOOL-FL01



EXPRESS FOR 5 MM

**EXPRESS LED CONNECTION SYSTEM
FOR 5 MM TAPES - IT COULDN'T BE SIMPLER**



This is the future of lighting installation. The clip system enables the LED strips to be attached quickly and securely without soldering. Simply attach the clips to the desired locations, clip in the LED strip and connect with the pliers. The connecting cables, tape to tape connector and tape corner connector make installation even easier and more flexible.

The advantages are obvious:

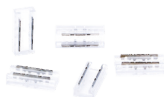
- ▶ Easy installation without screws or glue
- ▶ Quick connection of the LED strips thanks to the clip system
- ▶ Individual adaptation to every application
- ▶ Reliable connection for long-term use



CONNECTION LINES 500 & 2000 MM

Cable (2-pole) for 5 mm wide LED strips, AWG 20, max 3A

Article No.	Length
SL-CLIP2S-DB500S-V5	500 mm
SL-CLIP2S-DB2000S-V5	2.000 mm



STRAP TO STRAP CONNECTOR

Tape to tape connector for 5 mm wide LED tapes, max. 3A

Article No.	Packaging Unit
SL-CLIP2S-SS-V5	5 pcs



BAND-CORNER BAND CONNECTOR

Corner connection for 5 mm wide LED strips, max. 3A

Article No.	Packaging Unit
SL-CLIP2S-SWS-V5	5 pcs

PROCESSING



EXPRESS FOR 8 MM

EXPRESS LED CONNECTION SYSTEM FOR 8 MM STRAPS



- ▶ Universally applicable, with 8 mm wide SIRO MONO (Single Colour) LED strips: COB - GT High Efficiency - DIAMOND - XXL series
- ▶ The flat design of the clips allows for a variety of uses within the aluminum profiles.
- ▶ Solderless assembly, easy contacting by pressing the LED strip and connector
- ▶ permanent, secure connection, allows LED strips to be connected and connected absolutely reliably (compare with a solder connection) within a few seconds
- ▶ quick maintenance assistance for defective or older LED strip segments
- ▶ Uninterrupted light extension with tape-to-tape connector

SIMPLE INSTALLATION:

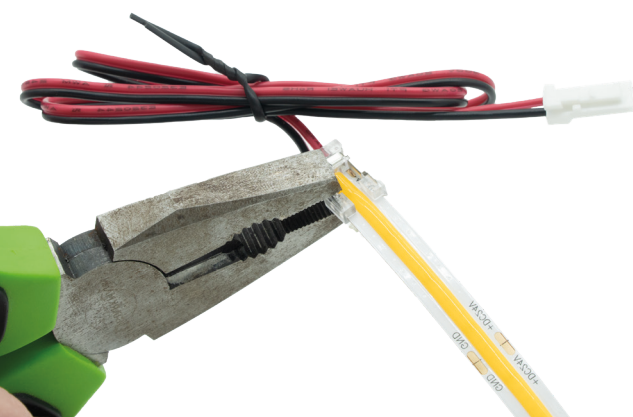
Save time and effort thanks to the uncomplicated installation of the Express LED Connection System.

RELIABLE CONNECTION:

Enjoy a stable and secure connection for a continuous lighting experience.

FLEXIBILITY:

Customize your LED lighting to suit your needs.



Article No.

Article description

SL-CAB2-5000	1 x 5 meter 2-pin cable
SL-CAB2-25000	1 x 25 meter 2-pin cable
SL-CAB2-IC-V5	5 x I-connectors
SL-CAB2-TC-V5	5 x T connectors
SL-CLIP2-DB500S-V5	5 x LED strip connection cable 500 mm
SL-CLIP2-DB2000S-V5	5 x LED ribbon connection cable 2000 mm
SL-CLIP2-SC60S-V5	5 x LED tape-cable-tape connector
SL-CLIP2-SS-V5	5 x LED strip to strip connectors
SL-CLIP2-SWS-V5	5 x LED strip corner strip connector



scan for video

LED strip connection cable 500 mm & 2000 mm

- ▶ Connection cable 8 mm wide SIRO COB tapes
- ▶ Cable length: 500 mm or 2000 mm with SIRO MONO plug
- ▶ max. 3A (72 Watt @ 24V DC)
- ▶ Packaging size 5 pcs.



Article No.

Article description

SL-CLIP2-DB500S-V5

5 x LED strip connection cable 500 mm

SL-CLIP2-DB2000S-V5

5 x LED ribbon connection cable 2000 mm

LED strip to strip connector

- ▶ LED tape to tape connector for 8 mm wide SIRO COB tapes
- ▶ Uninterrupted extension of COB tape segments
- ▶ max. 3A (72 Watt @ 24V DC)
- ▶ Packaging size 5 pcs.



Article No.

Article description

SL-CLIP2-SS-V5

5 x LED tape to tape connector for 8 mm

LED strip corner strip connector

- ▶ LED strip corner strip connector for 8 mm wide SIRO COB strips
- ▶ max. 3A (72 Watt @ 24V DC)
- ▶ Packaging size 5 pcs.



Article No.

Article description

SL-CLIP2-SWS-V5

5 x LED tape to tape connector for 8 mm

T-CONNECTOR

SL-CAB2-TC-V5

T-connector for 2-pole cable

I-CONNECTOR

SL-CAB2-IC-V5

I-connector for 2-pole cable





Creating a customized lighting system has never been easier.

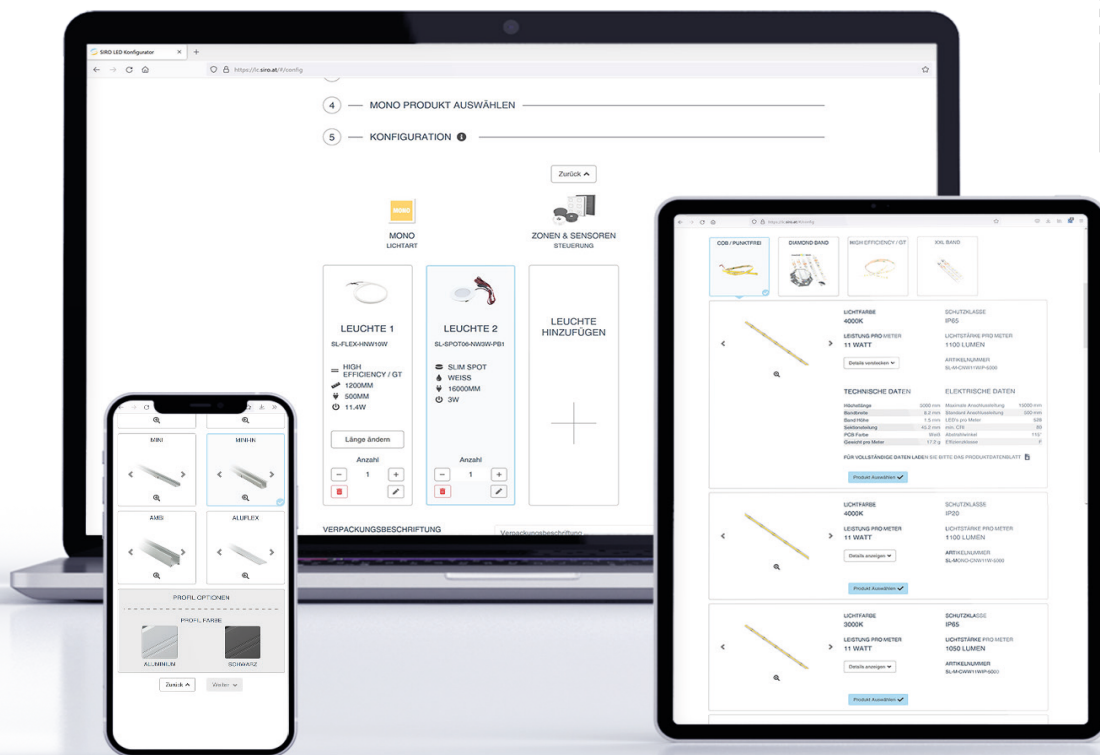
The new lighting configurator from SIRO is a versatile tool that allows you to plan your plug-in LED lighting system quickly and easily, without any prior knowledge.

Complete systems, made-to-measure luminaires or quotations for the offer phase - you enter your product requirements and then immediately receive a system price and a summary of all components with dimensional drawings and parts lists for further processing in PDF format.

Sounds simple, but it is. Try it out and create your own customized SIRO lighting system!

You can find more lighting products and our configurator at: www.siro-led.at

Customized lighting system WITH PERSONAL CONFIGURATOR





SIRO Beschläge u. Metallwarenfabrik Ges.m.b.H. | Spielfeldstraße 12 | A-4452 Ternberg | Austria
Tel: +43.(0)7256.6020.0 | Fax: +43.(0)7256.8932 | E-Mail: office@siro.at | www.siro-led.at