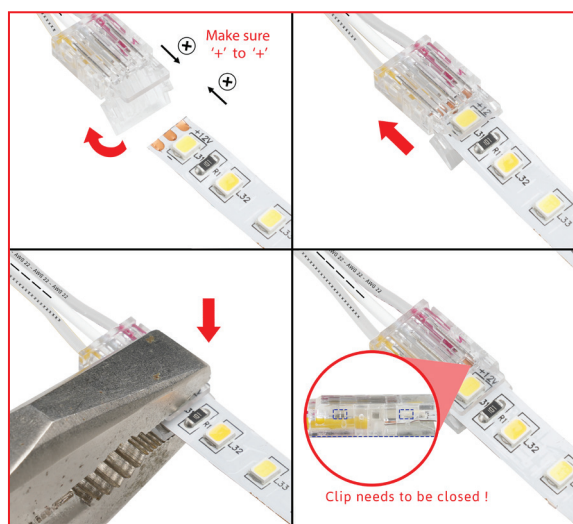


## SL-CLIP3-DB500S

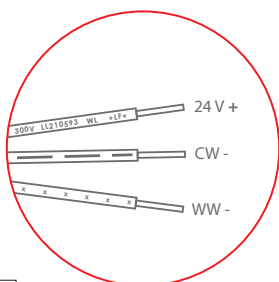
Led connection cable for 8 mm DUO stripes



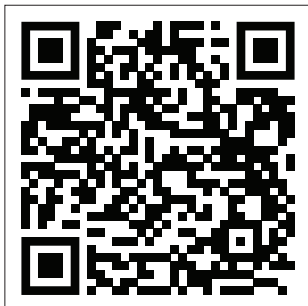
### INSTRUCTION



### CABLE POLARITY !



### VIDEO INSTRUCTION



### PRODUCT FEATURES

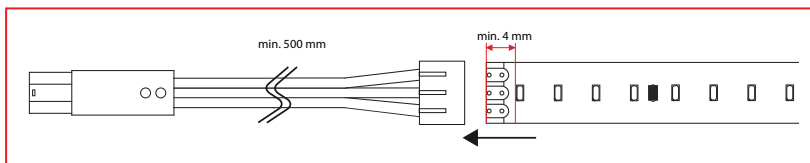
- ▶ DUO connection cable with 500 mm cable length
- ▶ Solderless connection concept
- ▶ 3-pole cable AWG 22
- ▶ Suitable for 8 mm wide SIRO DUO tapes with SMD chip
- ▶ Connection by simple locking system
- ▶ Packaging: 50 pieces / bulk packaging

### DIMENSIONS

- ▶ Dimensions (LxWxH):.....16.5 x 9.7 x 4.3 mm
- ▶ Cable length:.....500 mm
- ▶ Pins:.....3 Pins
- ▶ Led stripe width:.....8 mm
- ▶ Led stripe thickness: .....0,25 - 0,35 mm
- ▶ Led stripe Typ:.....SMD Chip

### TECHNICAL DATA

- ▶ Power: ..... 24V DC
- ▶ IP Rating:..... IP 20 (Innenbereich)
- ▶ Cable cross-section:..... AWG 22
- ▶ Max. Amperage: ..... 3.5 A = 84 Watt @ 24V DC
- ▶ Minimum distance from end of strip to LED chip:.. 4 mm  
(see technical sketch)



### SAFETY AND INSTALLATION INSTRUCTIONS

- ▶ This product is not a toy and is not suitable for children!
- ▶ The installation must be carried out in a de-energised state!
- ▶ The SIRO LED system is only suitable for indoor use.
- ▶ Unprotected outdoor use is not permitted.
- ▶ Contact with moisture must be avoided at all costs!