

LED CORNER CLIP

Product data sheet



SIRO
SPECIAL LIGHTING

SL-CLIP2-SWS-V5

stripe corner stripe connector

EXPRESS
LED CONNECTION CLIPS



PRODUCT FEATURES

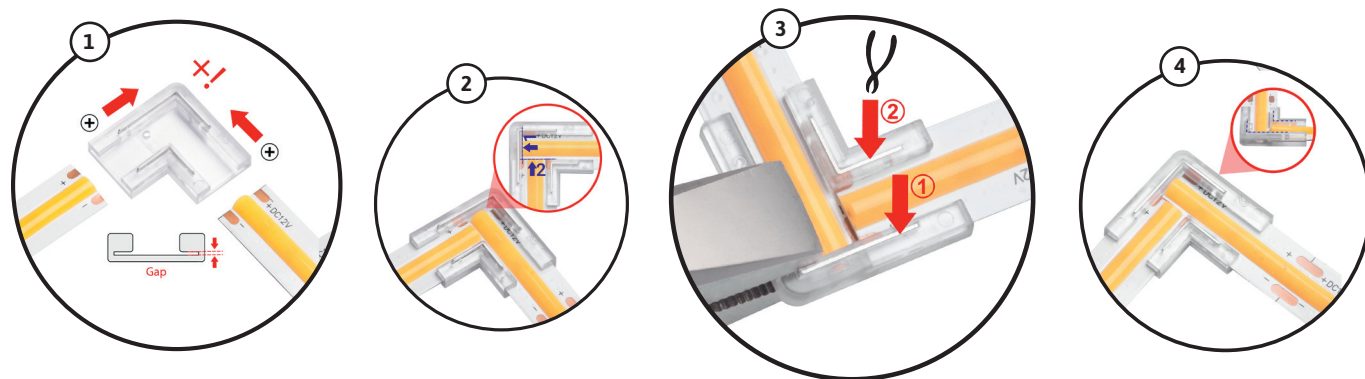
- » MONO Tape Corner Tape Connector
- » Solderless connection concept
- » suitable for 8 mm wide mono LED strips
- » Connection to LED tapes by simple locking system
- » Packaging unit: 5 pieces

DIMENSIONS

- » Dimensions (LxBxH) 17 x 17 x 3.3 mm
- » Pin Distance: 5,5 mm
- » LED stripe width: 8 mm
- » LED stripe thickness: 0.25~0.35 mm

TECHNICAL DATA

- » Rated current: 3 A
- » IP 20
- » max. operating temperature: 105 C°



SAFETY AND INSTALLATION INSTRUCTIONS

- » This product is not a toy and is not suitable for children!
- » The assembly must be carried out free of tension!
- » These products consist of sensitive electronic components and must not be exposed to mechanical stress.
- » Do not mount the LED strips / plugs on moving parts, free from tensile and torsional forces. Avoid mechanical stresses such as kinking, bending or chafing!

RoHS **CE**

Must not be disposed of in household waste.

SIRO Beschläge- und
Metallwarenfabrik
Spiefeldstraße 12
4452 Ternberg, Austria

Tel . +43 (0)7256.6020.0
Fax . +43 (0)7256.8932
E-Mail office@siro.at
Web . www.siro-light.at

© 2021 All rights reserved.