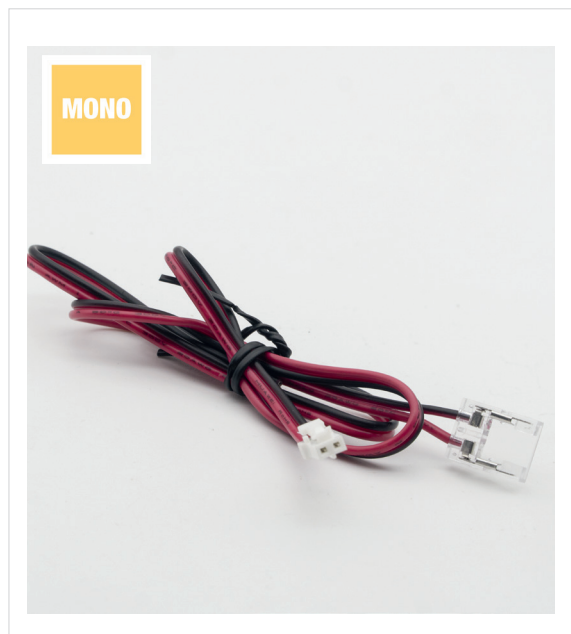


SL-CLIP2-DB500S-V5
connection cable

EXPRESS
LED CONNECTION SYSTEM



PRODUCT FEATURES

- » Express connection technology
- » MONO connection cable with 500 mm cable length
- » with SIRO MONO connector
- » Solderless connection concept
- » 2-pole round cable (black / red)
- » Suitable for 8 mm wide mono LED strips
- » 20 AWG
- » Connection to LED tapes by simple locking system
- » Packaging unit: 5 pieces

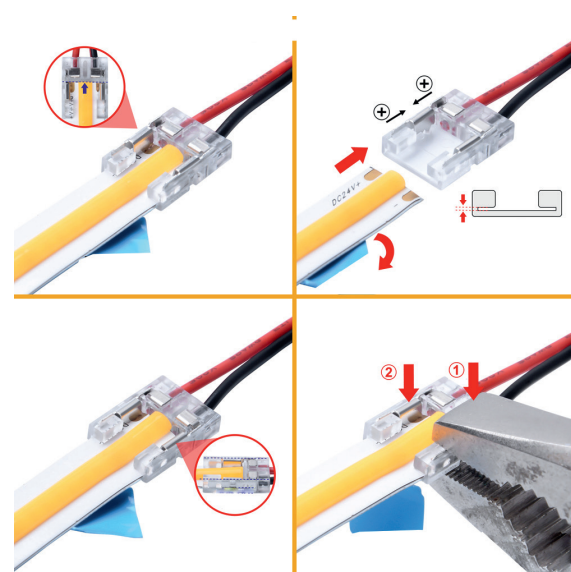
DIMENSIONS

- » Dimensions (LxBxH): 15.6 x 9.6 x 3.3 mm
- » Cable length: 500 mm
- » Pin Distance: 5.5 mm
- » LED Stripe width: 8 mm
- » LED Stripe Thickness: 0.25~0.35 mm

TECHNICAL DATA

- » Current: 3 A
- » AWG: 20 AWG
- » IP 20
- » Operating Temperature: -10 ~ 45 C

Remove the adhesive tape of the LED stripe before mounting the clip to ensure an optimum connection!



SICHERHEITS- UND MONTAGEHINWEISE

- » This product is not a toy and is not suitable for children!
- » The assembly must be carried out free of tension!
- » These products consist of sensitive electronic components and must not be exposed to mechanical stress.
- » Do not mount the LED strips / plugs on moving parts, free from tensile and torsional forces.
- » Avoid mechanical stresses such as kinking, bending or chafing!